

HP-1 β /CBX1 Rabbit Polyclonal Antibody(HP-1 b)

Catalog TDY670C TDY670F

Tel: 010-80117836

Web: www.tdybio.com

Quantity 50 μ L 100 μ L

Entrez-Gene ID:10951 , Swiss-Prot Acc.P83916

For research use only.

Applications	Species Cross-Reactivity	Molecular Weight	Isotype
WB,IHC	H,R,M	~25KD	IgG

Storage Buffer & Condition: Antigen Affinity Purified IgG in PBS, pH 7.4, containing 0.02% **sodium azide** as Preservative and 50% Glycerol.

Store at **-20°C. Do not aliquot the antibody.**

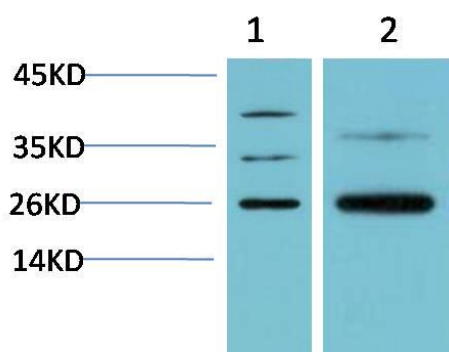
Recommended dilutions: WB: 1:1,000-5,000 IHC: 1:200-500

Optimal dilutions should be determined by the end user.

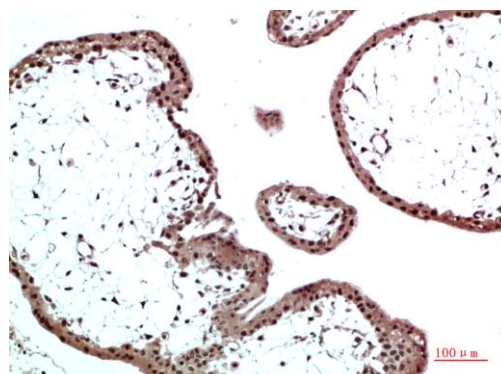
Specificity: Antibody can detects endogenous HP-1 β proteins.

Alternative Names: CBX, Heterochromatin protein 1 beta, HP1 beta, p25 beta

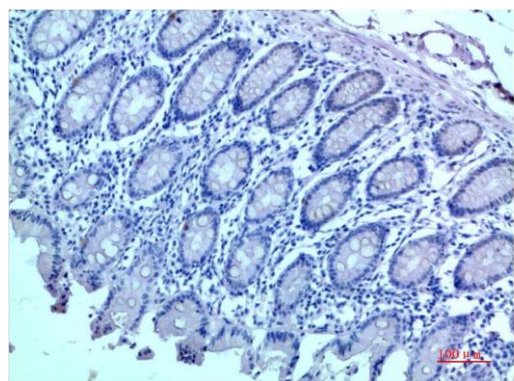
Background: Heterochromatin protein 1 (HP1) is a family of heterochromatic adaptor molecules involved in both gene silencing and higher order chromatin structure. All three HP1 family members (α , β , and γ) are primarily associated with centromeric heterochromatin.



Western blot analysis of 1) Hela Cell Lysate, 2) Rat Brain Tissue Lysate using HP-1 β /CBX1 (TDY670) Rabbit pAb diluted at 1:5000.



Immunohistochemical analysis of paraffin-embedded Human Placenta Tissue using HP-1 β /CBX1 (TDY670) Rabbit pAb diluted at 1:500



Negative

Immunohistochemical analysis of paraffin-embedded Human Colon Carcinoma Tissue using HP-1 β /CBX1 (TDY670) Rabbit pAb diluted at 1:500.

Applications: WB-Western blot IHC-Immunocytochemistry IF-Immunofluorescence IP-Immunoprecipitation ChIP-Chromatin Immunoprecipitation
Reactivity: H-Human R-Rat M-Mouse Mk-Monkey Dg-Dog Ch-Chicken Hm-Hamster Rb-Rabbit Sh-Sheep Pg-Pig Z-Zebrafish