

## HP-1 $\gamma$ Rabbit Polyclonal Antibody(HP-1 g)

Catalog TDY671C TDY671F

Tel: 010-80117836

Web: [www.tdybio.com](http://www.tdybio.com)

Quantity 50 $\mu$ L 100 $\mu$ L

Entrez-Gene ID:11335 , Swiss-Prot Acc.Q13185

**For research use only.**

| Applications | Species Cross-Reactivity | Molecular Weight | Isotype |
|--------------|--------------------------|------------------|---------|
| WB,IHC       | H,R,M                    | ~24KD            | IgG     |

**Storage Buffer & Condition:** Antigen Affinity Purified IgG in PBS, pH 7.4, containing 0.02% **sodium azide** as Preservative and 50% Glycerol.

Store at **-20°C. Do not aliquot the antibody.**

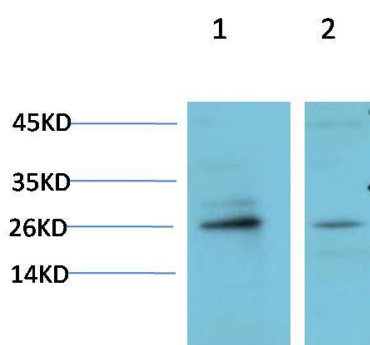
**Recommended dilutions:** WB: 1:200-500 IHC: 1:200-500

**Optimal dilutions should be determined by the end user.**

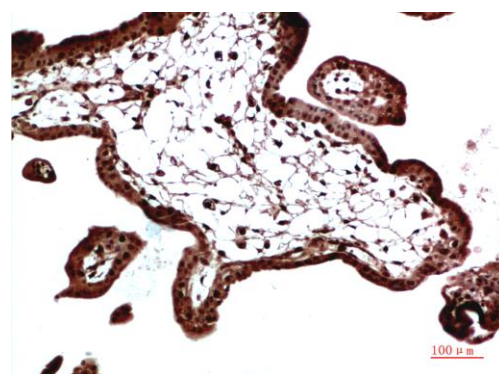
**Specificity:** Antibody can detects endogenous HP-1  $\gamma$  proteins.

**Alternative Names:** CBX3, Chromobox homolog 3, HECH, HP1 gamma

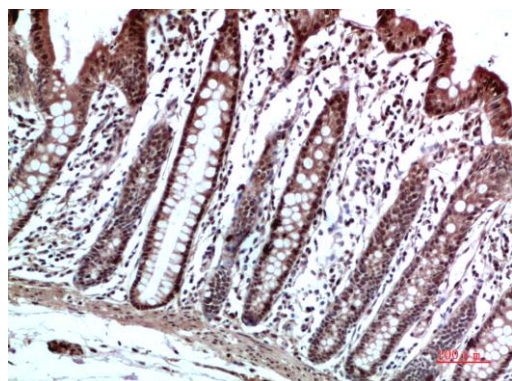
**Background:** Heterochromatin protein 1 (HP1) is a family of heterochromatic adaptor molecules involved in both gene silencing and higher order chromatin structure. All three HP1 family members ( $\alpha$ ,  $\beta$ , and  $\gamma$ ) are primarily associated with centromeric heterochromatin.



Western blot analysis of 1) Hela Cell Lysate, 2) Rat Brain Tissue Lysate using HP-1 $\gamma$  (TDY671) Rabbit pAb diluted at 1:1000.



Immunohistochemical analysis of paraffin-embedded Human Placenta Tissue using HP-1 $\gamma$  (TDY671) Rabbit pAb diluted at 1:500



Immunohistochemical analysis of paraffin-embedded Human Colon Carcinoma Tissue using HP-1 $\gamma$  (TDY671) Rabbit pAb diluted at 1:500.

**Applications:** WB-Western blot IHC-Immunochemistry IF-Immunofluorescence IP-Immunoprecipitation ChIP-Chormatin Immunoprecipitation  
**Reactivity:** H-Human R-Rat M-Mouse Mk-Monkey Dg-Dog Ch-Chicken Hm-Hamster Rb-Rabbit Sh-Sheep Pg-Pig Z-Zebrafish