

IκB α Rabbit Polyclonal Antibody(F168)

Catalog TDY686C TDY686F

Tel: 010-82908854

Web: www.tdybio.com

Quantity 50μL 100μL

Entrez-Gene ID:4792, Swiss-Prot Acc.P25963

For research use only.

Applications	Species Cross-Reactivity	Molecular Weight	Isotype
WB, IHC	H, R, M	40KD	IgG

Storage Buffer & Condition: Antigen Affinity Purified IgG in PBS, pH 7.4, containing 0.02% **sodium azide** as Preservative and 50% Glycerol.

Store at **-20°C. Do not aliquot the antibody.**

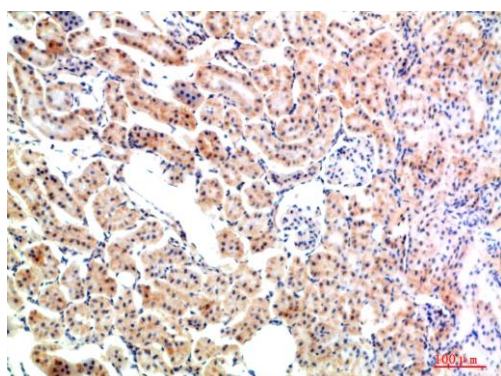
Recommended dilutions: WB: 1:500-1,000 IHC: 1:100-200

Optimal dilutions should be determined by the end user.

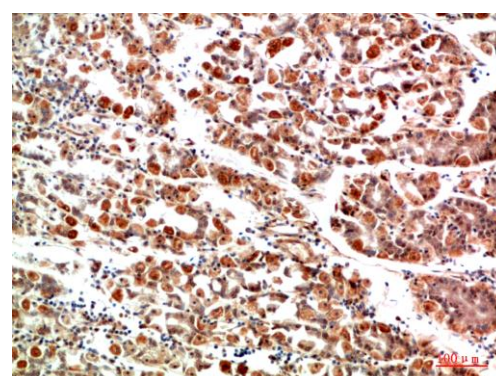
Specificity: The Antibody can detects endogenous IκB α proteins.

Alternative Names: I kappa B alpha antibody, IκB-alpha antibody, IKBA antibody, MAD3 antibody, NFκB inhibitor antibody

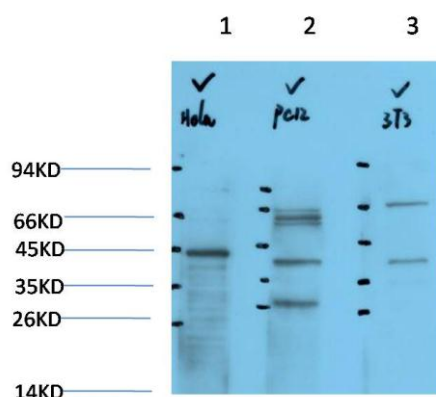
Background: Inhibits the activity of dimeric NF-kappa-B/REL complexes by trapping REL dimers in the cytoplasm through masking of their nuclear localization signals. IκBα phosphorylation and resulting Rel-dependent transcription are activated by a highly diverse group of extracellular signals including inflammatory cytokines, growth factors, and chemokines.



Immunohistochemical analysis of paraffin-embedded Rat Kidney Tissue using IκB α (TDY686) Rabbit pAb diluted at 1:200



Immunohistochemical analysis of paraffin-embedded Human Stomach Tissue using IκB α (TDY686) Rabbit pAb diluted at 1:200



Western blot analysis of 1) HeLa Cell Lysate, 2) PC12 Cell Lysate, 3) 3T3 Cell Lysate using IκB α (TDY686) Rabbit pAb diluted at 1:1000.

Applications: WB-Western blot IHC-Immunochemistry IF-Immunofluorescence IP-Immunoprecipitation ChIP-Chromatin Immunoprecipitation
Reactivity: H-Human R-Rat M-Mouse Mk-Monkey Dg-Dog Ch-Chicken Hm-Hamster Rb-Rabbit Sh-Sheep Pg-Pig Z-Zebrafish