

P38 Mouse Monoclonal Antibody(8C11)

Catalog	TDY716C	TDY716F	Tel: 010-80117836
			Web: www.tdybio.com
Quantity	50 μ L	100 μ L	Entrez-Gene ID:1432 , Swiss-Prot Acc.Q16539

For research use only.

Applications	Species Cross-Reactivity	Molecular Weight	Isotype
IHC	H,R,M	~42KD	IgG1

Storage Buffer & Condition: PBS, pH 7.4, containing 0.02% **sodium azide** as Preservative and 50% Glycerol.
Store at **-20°C. Do not aliquot the antibody.**

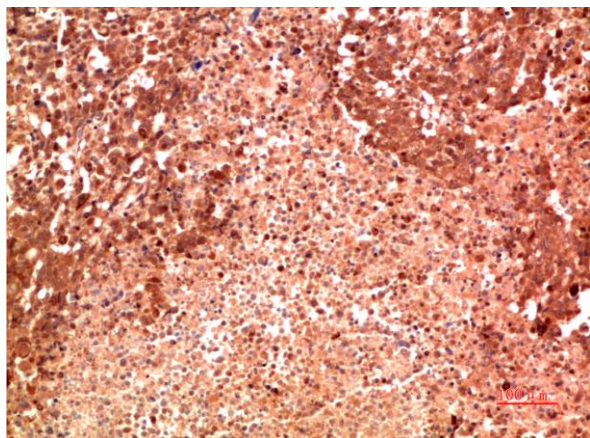
Recommended dilutions: IHC: 1:100-200

Optimal dilutions should be determined by the end user.

Specificity: The Antibody can detects endogenous p38 proteins.

Alternative Names: MAP kinase p38 alpha, p38 MAP kinase, CSBP , RK, MAPK 14 antibody

Background: p38 MAP kinase (MAPK) is the mammalian orthologue of the yeast HOG kinase that participates in a signaling cascade controlling cellular responses to cytokines and stress. Isoforms p38 α , β , γ and δ have been identified. p38 MAPK is activated by a variety of cellular stresses including osmotic shock, inflammatory cytokines, lipopolysaccharide (LPS), UV light, and growth factors.



Immunohistochemical analysis of paraffin-embedded Human Lung Carcinoma Tissue using P38 (TDY716) Mouse mAb diluted at 1:200