

BNP Rabbit Polyclonal Antibody

Catalog TDY786C TDY786F

Tel: 010-82908854

Web: www.tdybio.com

Quantity 50μL 100μL

Entrez-Gene ID:64223, Swiss-Prot Acc. Q9BVC4

For research use only.

Applications	Species Cross-Reactivity	Molecular Weight	Isotype
IHC	H	~37KD	IgG

Storage Buffer & Condition: Antigen Affinity Purified IgG in PBS, pH 7.4, containing 0.02% **sodium azide** as Preservative and 50% Glycerol.

Store at **-20°C**. **Do not aliquot the antibody.**

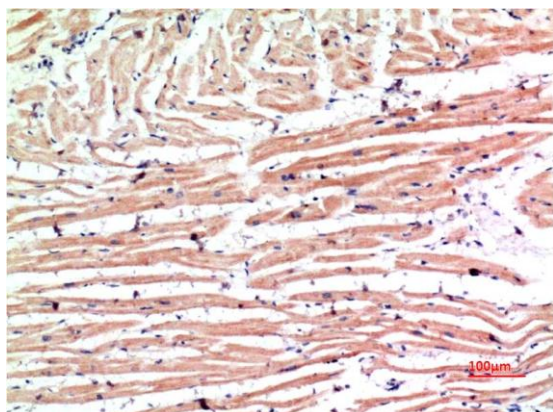
Recommended dilutions: IHC: 1:100-200

Optimal dilutions should be determined by the end user.

Specificity: The Antibody can detects endogenous NBP proteins.

Alternative Names: Natriuretic peptides B,NPPB,Gamma-Brain natriuretic peptide

Background: Natriuretic peptide B(NPPB) Homo sapiens This gene is a member of the natriuretic peptide family and encodes a secreted protein which functions as a cardiac hormone. The protein undergoes two cleavage events, one within the cell and a second after secretion into the blood. The protein's biological actions include natriuresis, diuresis, vasorelaxation, inhibition of renin and aldosterone secretion, and a key role in cardiovascular homeostasis. A high concentration of this protein in the bloodstream is indicative of heart failure. The protein also acts as an antimicrobial peptide with antibacterial and antifungal activity. Mutations in this gene have been associated with postmenopausal osteoporosis.



Immunohistochemical analysis of paraffin-embedded Human Heart Tissue using BNP (TDY786) Rabbit polyclonal antibody diluted at 1:100.