

C. Elegans α -tubulin Rabbit Polyclonal Antibody

Catalog	TDY1002C	TDY1002F	Tel: 010-80117836
			Web: www.tdybio.com
Quantity	50 μ L	100 μ L	Entrez-Gene ID:172831 , Swiss-Prot Acc.H2L2E8

For research use only.

Applications	Species Cross-Reactivity	Molecular Weight	Isotype
WB	C. Elegans (H, M, R)	52KD	IgG

Storage Buffer & Condition: Antigen Affinity Purified IgG in PBS, pH 7.4, containing 0.02% **sodium azide** as Preservative and 50% Glycerol.

Store at **-20°C. Do not aliquot the antibody.**

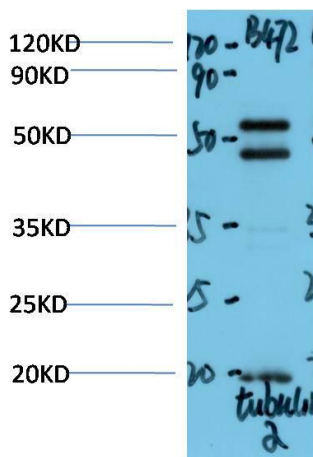
Recommended dilutions: WB: 1:1,000-2,000

Optimal dilutions should be determined by the end user.

Specificity: Antibody can detect endogenous C. Elegans α -tubulin protein, predict Cross-Reactivity with Human, Mouse, Rat.

Alternative Names: alpha tubulin 2, B alpha 1, H2 alpha, Hum a tub 1, TUBA1, TUBA1A, Tubulin alpha 1 chain

Background: Tubulin is one of several members of a small family of globular proteins. The tubulin superfamily includes five distinct families, the alpha-, beta-, gamma-, delta-, and epsilon-tubulins. The most common members of the tubulin family are α -tubulin and β -tubulin, the proteins that make up microtubules. Each has a molecular weight of approximately 55 KD. Microtubules are assembled from dimers of α - and β -tubulin.



Western blot analysis of C. Elegans whole body Lysate using (TDY1002)

Rabbit pAb diluted at 1:4,000.