

## Drosophila Melanogaster GAPDH Rabbit Polyclonal Antibody

Catalog	TDY1006C	TDY1006F	Tel: 010-80117836
			Web: www.tdybio.com
Quantity	50μL	100μL	Entrez-Gene ID:35728 , Swiss-Prot Acc.P07486

**For research use only.**

Applications	Species Cross-Reactivity	Molecular Weight	Isotype
WB	Drosophila Melanogaster (H, M, R)	38KD	IgG

**Storage Buffer & Condition:** Antigen Affinity Purified IgG in PBS, pH 7.4, containing 0.02% **sodium azide** as Preservative and 50% Glycerol.

Store at **-20°C. Do not aliquot the antibody.**

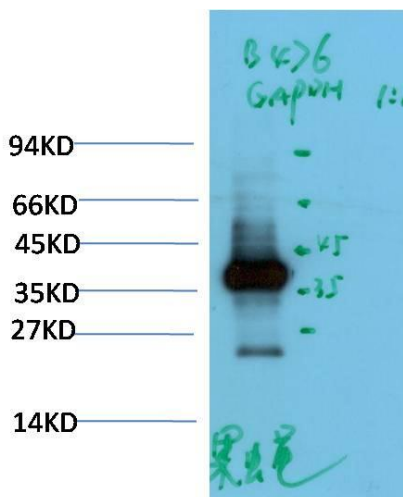
**Recommended dilutions: WB: 1:5,000-10,000**

**Optimal dilutions should be determined by the end user.**

**Specificity:** Antibody can detect endogenous Drosophila Melanogaster GAPDH protein, predict Cross-Reactivity with Human, Mouse, Rat.

**Alternative Names:** G3PDH antibody, BARS-38 antibody, Glyceraldehyde 3 phosphate dehydrogenase antibody

**Background:** Glyceraldehyde 3 phosphate dehydrogenase (GAPDH) is well known as one of the key enzymes involved in glycolysis. GAPDH is constitutively expressed in almost all tissues at high levels, therefore antibodies against GAPDH are useful as loading controls for Western Blotting. Some physiological factors, such as hypoxia and diabetes, increase GAPDH expression in certain cell types.



Western blot analysis of Drosophila Melanogaster whole body Lysate using

(TDY1006) Rabbit pAb diluted at 1:10,000.