

## C. Elegans $\beta$ -actin Mouse Monoclonal Antibody(Mix-mA)

Catalog	TDY1014C	TDY1014F	Tel: 010-80117836
Quantity	50 $\mu$ L	100 $\mu$ L	Web: www.tdybio.com
			Entrez-Gene ID:179535 , Swiss-Prot Acc.P0DM41

**For research use only.**

Applications	Species Cross-Reactivity	Molecular Weight	Isotype
WB	C. Elegans (H, M, R)	43KD	IgG

**Storage Buffer & Condition:** Antigen Affinity Purified IgG in PBS, pH 7.4, containing 0.02% **sodium azide** as Preservative and 50% Glycerol.

Store at **-20°C**. **Do not aliquot the antibody.**

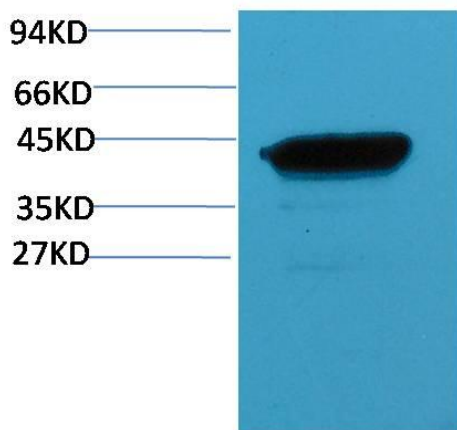
**Recommended dilutions:WB:1:10,000-100,000**

**Optimal dilutions should be determined by the end user.**

**Specificity:** Antibody can detect endogenous C.Elegans  $\beta$ -actin protein, predict Cross-Reactivity with Human, Mouse, Rat.

**Alternative Names:** actin antibody, b-actin antibody, beta-actin antibody

**Background:**  $\beta$ -actin is one of six different actin isoforms that have been identified. The actin molecules found in cells of various species and tissues tend to be very similar in their immunological and physical properties. Therefore, antibodies against  $\beta$ -actin are useful as loading controls for Western Blotting. However it should be noted that levels of  $\beta$ -actin may not be stable in certain cells. For example, expression of  $\beta$ -actin in adipose tissue is very low and therefore  $\beta$ -actin should not be used as loading control for these tissues.



Western blot analysis of C.Elegans whole body Lysate using (TDY1014) Mouse mAb diluted at 1:50,000.