

## C. Elegans $\alpha$ -tubulin Mouse Monoclonal Antibody(Mix-mA)

Catalog	TDY1016C	TDY1016F	Tel: 010-80117836
			Web: www.tdybio.com
Quantity	50 $\mu$ L	100 $\mu$ L	Entrez-Gene ID:172831 , Swiss-Prot Acc.H2L2E8

**For research use only.**

Applications	Species Cross-Reactivity	Molecular Weight	Isotype
WB	C. Elegans (H, M, R)	52KD	IgG

**Storage Buffer & Condition:** Antigen Affinity Purified IgG in PBS, pH 7.4, containing 0.02% **sodium azide** as Preservative and 50% Glycerol.

Store at **-20°C. Do not aliquot the antibody.**

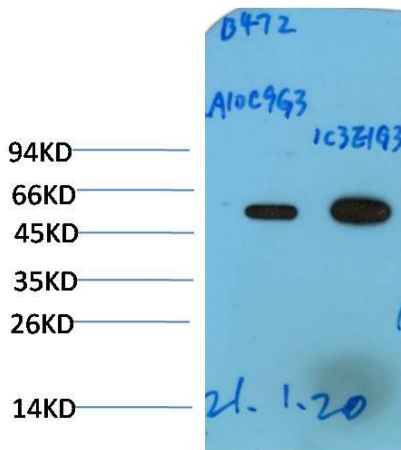
**Recommended dilutions:WB:1:10,000-20,000**

**Optimal dilutions should be determined by the end user.**

**Specificity:** Antibody can detect endogenous C.Elegans  $\alpha$ -tubulin protein, predict Cross-Reactivity with Human, Mouse, Rat.

**Alternative Names:** alpha tubulin 2, B alpha 1, H2 alpha, Hum a tub 1, TUBA1, TUBA1A, Tubulin alpha 1 chain

**Background:** Tubulin is one of several members of a small family of globular proteins. The tubulin superfamily includes five distinct families, the alpha-, beta-, gamma-, delta-, and epsilon-tubulins. The most common members of the tubulin family are  $\alpha$ -tubulin and  $\beta$ -tubulin, the proteins that make up microtubules. Each has a molecular weight of approximately 55 KD. Microtubules are assembled from dimers of  $\alpha$ - and  $\beta$ -tubulin.



Western blot analysis of C.Elegans whole body Lysate using (TDY1016)

Mouse mAb diluted at 1:20,000.