

C. Elegans β -tubulin Mouse Monoclonal Antibody(Mix-mA)

Catalog	TDY1017C	TDY1017F	Tel: 010-80117836
			Web: www.tdybio.com
Quantity	50 μ L	100 μ L	Entrez-Gene ID:176501 , Swiss-Prot Acc.O17921

For research use only.

Applications	Species Cross-Reactivity	Molecular Weight	Isotype
WB	C. Elegans (H, M, R)	53KD	IgG

Storage Buffer & Condition: Antigen Affinity Purified IgG in PBS, pH 7.4, containing 0.02% **sodium azide** as Preservative and 50% Glycerol.

Store at **-20°C. Do not aliquot the antibody.**

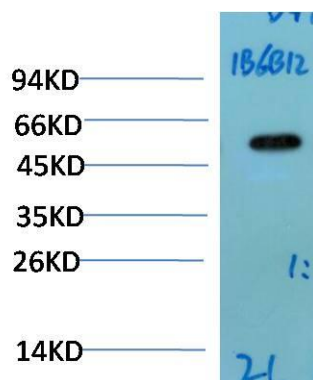
Recommended dilutions:WB:1:10,000-20,000

Optimal dilutions should be determined by the end user.

Specificity: Antibody can detect endogenous C.Elegans β -tubulin protein, predict Cross-Reactivity with Human, Mouse, Rat.

Alternative Names: Beta 4 tubulin, TBB5, TUBB2, TUBB2A, tubulin beta 2A, beta tubulin, tubulin beta chain

Background: Microtubules are constituent parts of the mitotic apparatus, cilia, flagella, and elements of the cytoskeleton. They consist principally of 2 soluble proteins, alpha- and beta-tubulin, each of about 55,000 Da. Antibodies against beta Tubulin are useful as loading controls for Western Blotting. However it should be noted that levels of β -Tubulin may not be stable in certain cells. For example, expression of β -Tubulin in adipose tissue is very low and therefore β -Tubulin should not be used as loading control for these tissues.



Western blot analysis of C.Elegans whole body Lysate using (TDY1017)

Mouse mAb diluted at 1:20,000.