

## Rubisco Mouse Polyclonal Antibody(Large Chain)

Catalog	TDY182C	TDY182F
Quantity	50 $\mu$ L	100 $\mu$ L

Tel: 010-82908854  
Free: 400-0620-621  
Web: www.tdybio.com

**For research use only.**

Applications	Species Cross-Reactivity	Molecular Weight	Isotype
WB	Various Plants	~53KD	IgG

**Storage Buffer & Condition:** PBS, pH 7.4, containing 0.02% **sodium azide** as Preservative and 50% Glycerol.  
Store at **-20°C**. **Do not aliquot the antibody.**

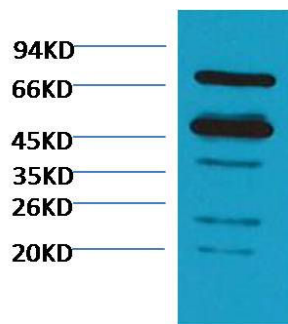
**Recommended dilutions: WB: 1:3,000-5,000**

**Optimal dilutions should be determined by the end user.**

**Specificity:** The Rubisco Mouse Polyclonal Antibody can detects endogenous Rubisco Large Chain protein.

**Alternative Names:** Ribulose biphosphate carboxylase oxygenase

**Background:** Ribulose-1,5-bisphosphate carboxylase oxygenase, commonly known by the abbreviation **RuBisCO**, is an enzyme involved in the first major step of carbon fixation, a process by which atmospheric carbon dioxide is converted by plants to energy-rich molecules such as glucose.



Western blot analysis of *Arabidopsis thaliana* with TDY182 diluted at 1:5,000.