

## HSP40 Mouse Monoclonal Antibody(Mix-mA)

Catalog TDY1040C TDY1040F

Tel: 010-80117836

Web: www.tdybio.com

Quantity 50μL 100μL

Entrez-Gene ID:3337 , Swiss-Prot Acc.P25685

**For research use only.**

Applications	Species Cross-Reactivity	Molecular Weight	Isotype
WB, IHC	H, R, M	40KD	IgG1

**Storage Buffer & Condition:** Antigen Affinity Purified IgG1 in PBS, pH 7.4, containing 0.02% **sodium azide** as Preservative and 50% Glycerol.

Store at **-20°C. Do not aliquot the antibody.**

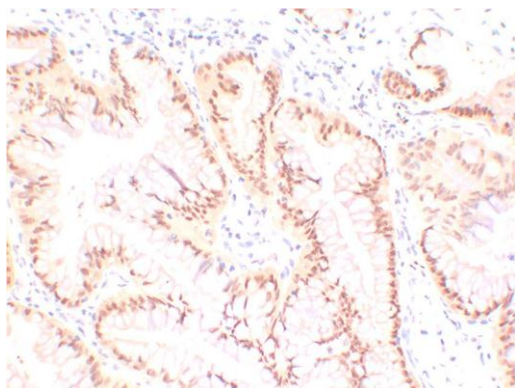
**Recommended dilutions:** WB: 1:1,000-2,000 IHC: 1:100-200

**Optimal dilutions should be determined by the end user.**

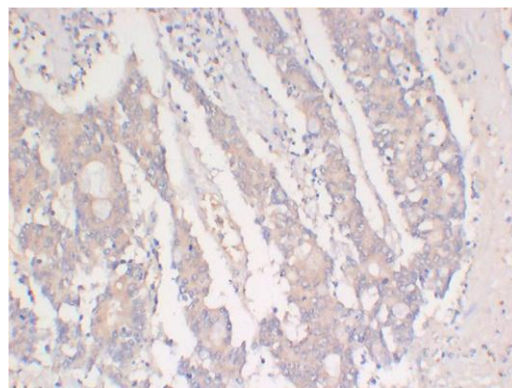
**Specificity:** The Antibody can detect endogenous HSP40 proteins.

**Alternative Names:** DNA J B1, HDJ1, HSPF1, Heat Shock Protein 40

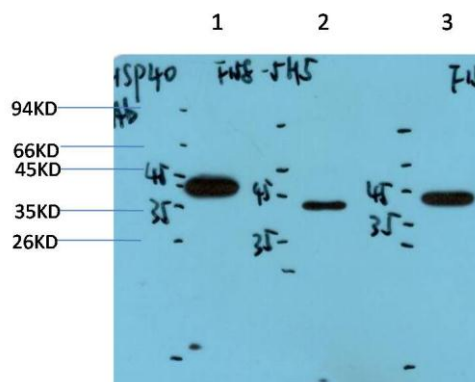
**Background:** HSP40 and HSP40-like proteins represent a large family of chaperone proteins that are homologous to *E. coli* DnaJ protein. HSP40 family proteins bind unfolded proteins, prevent their aggregation, and then deliver them to HSP70. Another major function of HSP40 is to stimulate ATPase activity of HSP70, which causes conformational change of the unfolded proteins.



Immunohistochemical analysis of paraffin-embedded Human Lung Carcinoma Tissue using HSP40 (TDY1040) Mouse Monoclonal antibody diluted at 1:200.



Immunohistochemical analysis of paraffin-embedded Human Colon Carcinoma Tissue using HSP40 (TDY1040) Mouse Monoclonal antibody diluted at 1:200.



Western blot analysis of 1) HeLa Cell, 2) Mouse Liver, 3) PC12 Cell Lysate using HSP40 (TDY1040) Mouse Monoclonal mAb diluted at 1:2,000.

**Applications:** WB-Western blot IHC-Immunochemistry IF-Immunofluorescence IP-Immunoprecipitation ChIP-Chromatin Immunoprecipitation  
**Reactivity:** H-Human R-Rat M-Mouse Mk-Monkey Dg-Dog Ch-Chicken Hm-Hamster Rb-Rabbit Sh-Sheep Pg-Pig Z-Zebrafish