

S100A8 Mouse Monoclonal Antibody (Mix-mA)

| | | | |
|----------|----------|----------|---|
| Catalog | TDY1072C | TDY1072F | Tel: 010-80117836 |
| | | | Web: www.tdybio.com |
| Quantity | 50μL | 100μL | Entrez-Gene ID:6279/6280 , Swiss-Prot Acc.P05109/P06702 |

For research use only.

| Applications | Species Cross-Reactivity | Molecular Weight | Isotype |
|--------------|--------------------------|------------------|---------|
| IHC | H | 10KD | IgG1 |

Storage Buffer & Condition: Antigen Affinity Purified IgG in PBS, pH 7.4, containing 0.02% **sodium azide** as Preservative and 50% Glycerol.

Store at **-20°C**. **Do not aliquot the antibody.**

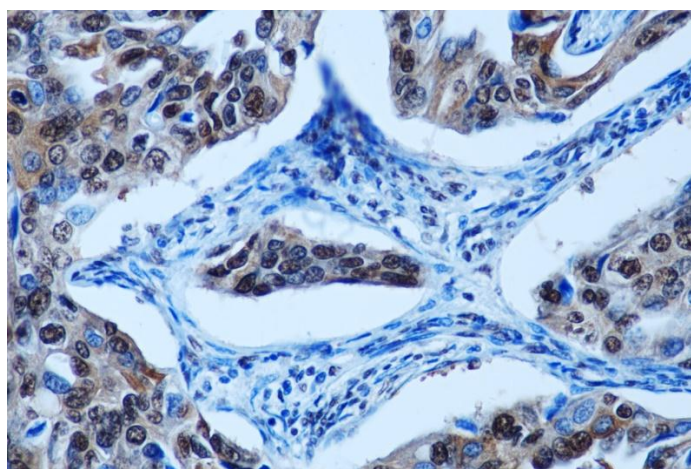
Recommended dilutions: IHC: 1:100-200

Optimal dilutions should be determined by the end user.

Specificity: Antibody can detect endogenous S100A8 protein.

Alternative Names: MRP8, CAGA, Calgranulin-A

Background: S100 proteins are localized in the cytoplasm and/or nucleus of a wide range of cells, and involved in the regulation of a number of cellular processes such as cell cycle progression and differentiation. S100 calcium binding protein A8, Homo sapiens, The protein encoded by this gene is a member of the S100 family of proteins containing 2 EF-hand calcium-binding motifs.



Immunohistochemical analysis of paraffin-embedded Human Breast Carcinoma Tissue using S100A8 (TDY1072) Mouse mAb diluted at 1:200.