

PLK1 Mouse Monoclonal Antibody (Mix-mA)

Catalog	TDY1075C	TDY1075F	Tel: 010-80117836
			Web: www.tdybio.com
Quantity	50μL	100μL	Entrez-Gene ID:5347 , Swiss-Prot Acc.:P53350

For research use only.

Applications	Species Cross-Reactivity	Molecular Weight	Isotype
WB	H, M, R	~62	IgG1

Storage Buffer & Condition: Antigen Affinity Purified IgG in PBS, pH 7.4, containing 0.02% **sodium azide** as Preservative and 50% Glycerol. Store at **-20°C. Do not aliquot the antibody.**

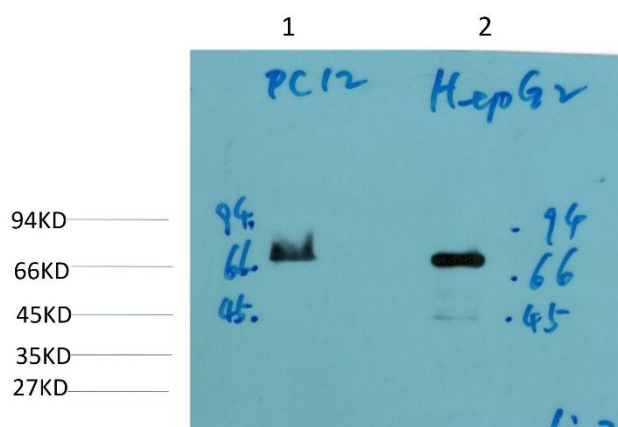
Recommended dilutions: WB: 1:1,000-2,000

Optimal dilutions should be determined by the end user.

Specificity: The Antibody can detect endogenous PLK1 proteins.

Alternative Names: PLK, Polo-like kinase, Serine/threonine protein kinase PLK1

Background: Polo Like Kinase 1 (PLK1) Homo sapiens The Ser/Thr protein kinase encoded by this gene belongs to the CDC5/Polo subfamily. It is highly expressed during mitosis and elevated levels are found in many different types of cancer. Depletion of this protein in cancer cells dramatically inhibited cell proliferation and induced apoptosis; hence, it is a target for cancer therapy.



Western blot analysis of 1) PC12 Cell, 2) HepG2 Cell Lysate using PLK1

(TDY1075) Mouse mAb diluted at 1:2,000.