

## Yeast $\alpha$ -tubulin Mouse Monoclonal Antibody(4E8)

Catalog	TDY1077C	TDY1077F	Tel: 010-80117836
			Web: www.tdybio.com
Quantity	50 $\mu$ L	100 $\mu$ L	Entrez-Gene ID:854889 , Swiss-Prot Acc.P09733

**For research use only.**

Applications	Species Cross-Reactivity	Molecular Weight	Isotype
WB	Yeast (H, M, R)	52KD	IgG

**Storage Buffer & Condition:** Antigen Affinity Purified IgG in PBS, pH 7.4, containing 0.02% **sodium azide** as Preservative and 50% Glycerol.

Store at **-20°C**. **Do not aliquot the antibody.**

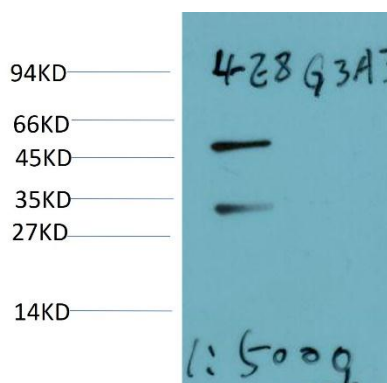
**Recommended dilutions:** WB: 1:2,000-5,000

**Optimal dilutions should be determined by the end user.**

**Specificity:** Antibody can detect endogenous Yeast  $\alpha$ -tubulin protein, predict Cross-Reactivity with Human, Mouse, Rat.

**Alternative Names:** alpha tubulin 2, B alpha 1, H2 alpha, Hum a tub 1, TUBA1, TUBA1A, Tubulin alpha 1 chain

**Background:** Tubulin is one of several members of a small family of globular proteins. The tubulin superfamily includes five distinct families, the alpha-, beta-, gamma-, delta-, and epsilon-tubulins. The most common members of the tubulin family are  $\alpha$ -tubulin and  $\beta$ -tubulin, the proteins that make up microtubules. Each has a molecular weight of approximately 55 KD. Microtubules are assembled from dimers of  $\alpha$ - and  $\beta$ -tubulin.



Western blot analysis of Yeast Whole Body Lysate using (TDY1077) Mouse mAb (1:5,000).