

Desmin Rabbit Polyclonal Antibody

Catalog	TDY1082C	TDY1082F	Tel: 010-80117836
			Web: www.tdybio.com
Quantity	50μL	100μL	Entrez-Gene ID#1674, Swiss-Prot Acc.#P17661

For research use only.

Applications	Species Cross-Reactivity	Molecular Weight	Isotype
WB	H, M, R	54KD	IgG

Storage Buffer & Condition:Antigen Affinity Purified IgG in PBS, pH 7.4, containing 0.02% **sodium azide** as Preservative and 50% Glycerol.

Store at **-20°C. Do not aliquot the antibody.**

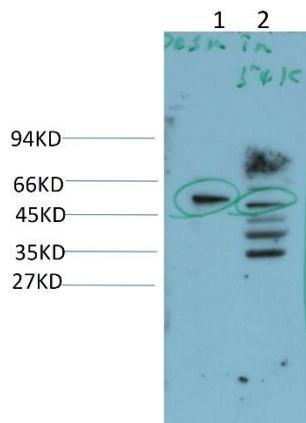
Recommended dilutions:WB: 1:1,000-2,000

Optimal dilutions should be determined by the end user.

Specificity:Antibody can detects endogenous Desmin proteins.

Alternative Names:DES antibody

Background: Desmin(DES) Homo sapiens This gene encodes a muscle-specific class III intermediate filament. Homopolymers of this protein form a stable intracytoplasmic filamentous network connecting myofibrils to each other and to the plasma membrane. Mutations in this gene are associated with desmin-related myopathy, a familial cardiac and skeletal myopathy (CSM), and with distal myopathies.



Western blot analysis of 1) Mouse Heart Tissue, 2) Rat Heart Tissue Lysate using Desmin

(TDY1082) Rabbit Polyclonal Antibody diluted at 1:2,000.