

SGT1/ECD Rabbit Polyclonal Antibody

Catalog	TDY1088C	TDY1088F	Tel: 010-80117836
			Web: www.tdybio.com
Quantity	50μL	100μL	Entrez-Gene ID#11319 , Swiss-Prot Acc.O95905

For research use only.

Applications	Species Cross-Reactivity	Molecular Weight	Isotype
WB	H, R, M	~73KD	IgG

Storage Buffer & Condition: PBS, pH 7.4, containing 0.02% **sodium azide** as Preservative and 50% Glycerol.
Store at **-20°C. Do not aliquot the antibody.**

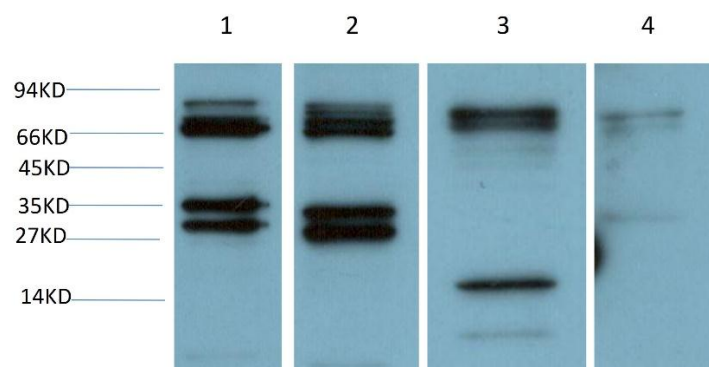
Recommended dilutions:WB: 1:2,000-5,000

Optimal dilutions should be determined by the end user.

Specificity:Antibody can detects Human endogenous SGT1/ECD proteins.

Alternative Names: ECD,hSGT1,human suppressor of GCR two,suppressor of GCR2,SGT1 protein

Background:



Western blot analysis of 1)Hela Cell, 2) 293T Cell, 3)Mouse Brain Tissue, 4) Rat Brain Tissue Lysate using SGT1/ECD (TDY1088) Rabbit polyclonal Antibody diluted at 1:2,000.