

Cofilin Rabbit Polyclonal Antibody

Catalog	TDY1083C	TDY1083F	Tel: 010-80117836
			Web: www.tdybio.com
Quantity	50μL	100μL	Entrez-Gene ID#1072 , Swiss-Prot Acc.#P23528

For research use only.

Applications	Species Cross-Reactivity	Molecular Weight	Isotype
WB	H,M,R	~19KD	IgG

Storage Buffer & Condition: PBS, pH 7.4, containing 0.02% **sodium azide** as Preservative and 50% Glycerol.
Store at **-20°C. Do not aliquot the antibody.**

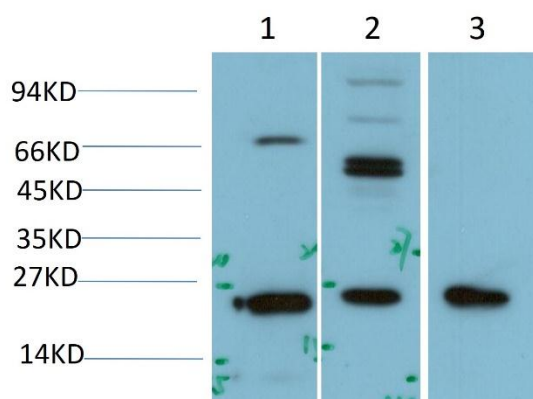
Recommended dilutions: WB: 1:2,000-5,000

Optimal dilutions should be determined by the end user.

Specificity: Antibody can detect Human endogenous cofilin proteins.

Alternative Names: CFL1; CFL; Cofilin-1; 18 kDa phosphoprotein; p18; Cofilin; non-muscle isoform

Background: Cofilin 1 (CFL1) Homo sapiens The protein encoded by this gene can polymerize and depolymerize F-actin and G-actin in a pH-dependent manner. Increased phosphorylation of this protein by LIM kinase aids in Rho-induced reorganization of the actin cytoskeleton. Cofilin is a widely distributed intracellular actin-modulating protein that binds and depolymerizes filamentous F-actin and inhibits the polymerization of monomeric G-actin in a pH-dependent manner. It is involved in the translocation of actin-cofilin complex from cytoplasm to nucleus.



Western blot analysis of 1) HeLa Cell, 2) 3T3 Cell, 3) PC12 Cell Lysate using Cofilin (TDY1083) Rabbit Polyclonal Antibody diluted at 1:2,000.