

Maspin Mouse Monoclonal Antibody(1D7)

| | | | |
|----------|----------|----------|--|
| Catalog | TDY1095C | TDY1095F | Tel: 010-80117836 |
| Quantity | 50μL | 100μL | Web: www.tdybio.com |
| | | | Entrez-Gene ID:5629, Swiss-Prot Acc.P36952 |

For research use only.

| Applications | Species Cross-Reactivity | Molecular Weight | Isotype |
|--------------|--------------------------|------------------|---------|
| WB | H, M, R | ~42KD | IgG1 |

Storage Buffer & Condition: Antigen Affinity Purified Rabbit IgG, 1mg/ml in PBS pH7.4, containing 0.02% **sodium azide** as Preservative and 50% Glycerol.

Store at **-20°C. Do not aliquot the antibody.**

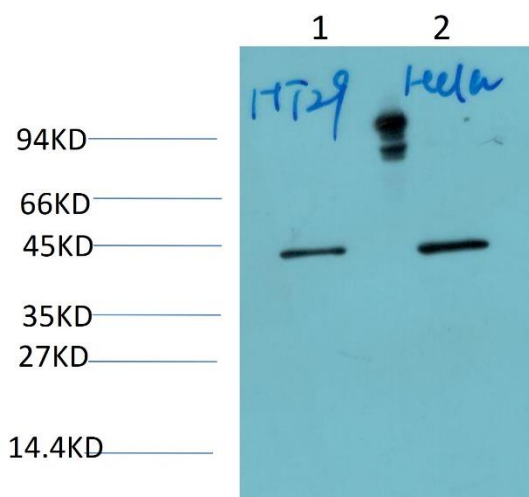
Recommended dilutions: WB: 1:1,000-2,000

Optimal dilutions should be determined by the end user.

Specificity: Antibody can detects endogenous Maspin proteins.

Alternative Names: Serpin B5,peptidase inhibitor 5,PI-5

Background: function:Tumor suppressor. It blocks the growth, invasion, and metastatic properties of mammary tumors. As it does not undergo the S (stressed) to R (relaxed) conformational transition characteristic of active serpins, it exhibits no serine protease inhibitory ctivity.,similarity:Belongs to the serpin family. Ov-serpin subfamily.,tissue specificity:Normal mammary epithelial cells.



Western blot analysis of 1)HT-29 Cell, 2) HeLa Cell Lysate using Maspin

(TDY1095) Mouse Monoclonal Antibody diluted at 1:2,000.