

Claudin-2 Mouse Monoclonal Antibody(3C5)

Catalog TDY790C TDY790F

Quantity 50μL 100μL

Tel: 010-80117836

Web: www.tdybio.com

Entrez-Gene ID:9075, Swiss-Prot Acc.P57739

For research use only.

Applications	Species	Cross-Reactivity	Molecular Weight	Isotype
IHC	H	H	25KD	IgG1

Storage Buffer & Condition: PBS, pH 7.4, containing 0.02% **sodium azide** as Preservative and 50% Glycerol.
Store at **-20°C**. **Do not aliquot the antibody.**

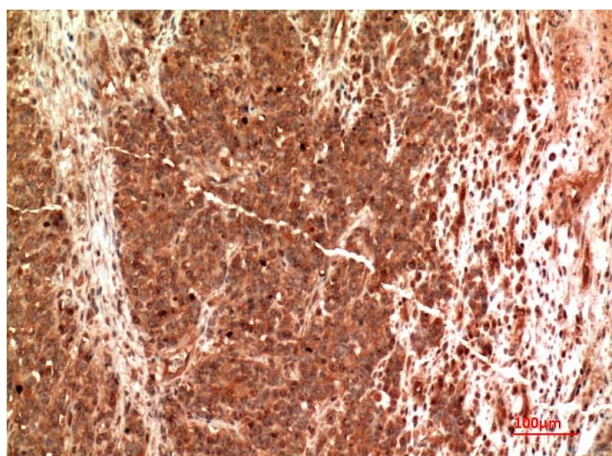
Recommended dilutions: IHC: 1:100~200

Optimal dilutions should be determined by the end user.

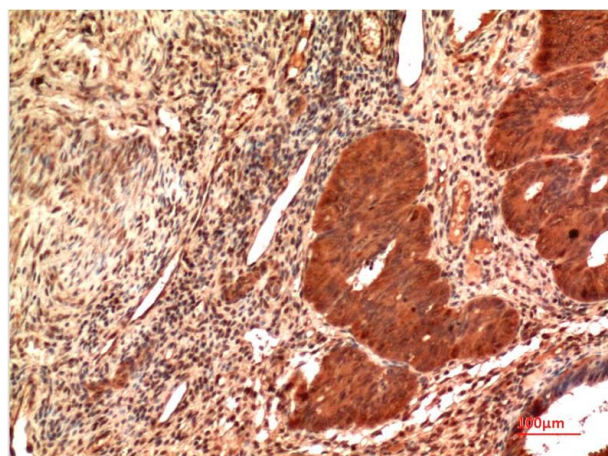
Specificity: Claudin-2 antibody detects endogenous Claudin-2 proteins.

Alternative Names: Claudin2, CLDN2, SP82

Background: The claudin family is composed of 23 integral membrane proteins, and their expression, which varies among tissue types, may determine both the strength and properties of the epithelial barrier. Alteration in claudin protein expression pattern is associated with several types of cancer. Claudin-2 is expressed primarily in the proximal tubule of the normal mammalian kidney, where it regulates transepithelial ion (e.g., Na⁺, Cl⁻) reabsorption. Increased expression of Claudin-2 has been reported in some cancer cell lines, including A549 lung adenocarcinoma cells, where its nuclear distribution was positively associated with enhanced proliferation.



Immunohistochemical analysis of paraffin-embedded Human Kidney Carcinoma Tissue using Claudin-2 (TDY790) Mouse mAb diluted at 1:200.



Immunohistochemical analysis of paraffin-embedded Human Endometrial Carcinoma Tissue using Claudin-2 (TDY790) Mouse mAb diluted at 1:200.

Applications: WB-Western blot IHC-Immunohistochemistry IF-Immunofluorescence IP-Immunoprecipitation ChIP-Chromatin
Immunoprecipitation
Reactivity: H-Human R-Rat M-Mouse Mk-Monkey Dg-Dog Ch-Chicken Hm-Hamster Rb-Rabbit Sh-Sheep Pg-Pig