

Claudin-7 Mouse Monoclonal Antibody(3F7)

Catalog TDY793C TDY793F

Quantity 50μL 100μL

Tel: 010-80117836

Web: www.tdybio.com

Entrez-Gene ID:9075, Swiss-Prot Acc.P57739

For research use only.

Applications	Species Cross-Reactivity	Molecular Weight	Isotype
WB, IHC	H, M	23KD	IgG1

Storage Buffer & Condition: PBS, pH 7.4, containing 0.02% **sodium azide** as Preservative and 50% Glycerol.
Store at **-20°C. Do not aliquot the antibody.**

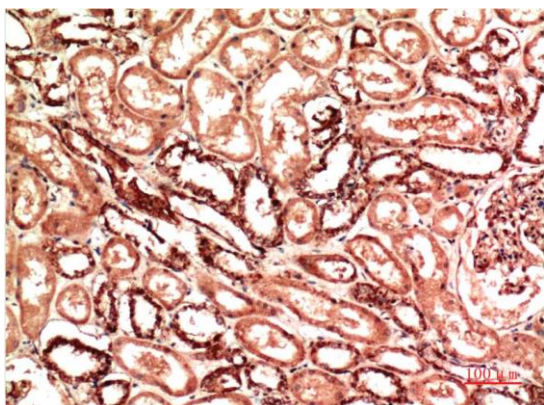
Recommended dilutions: IHC: 1:100~200

Optimal dilutions should be determined by the end user.

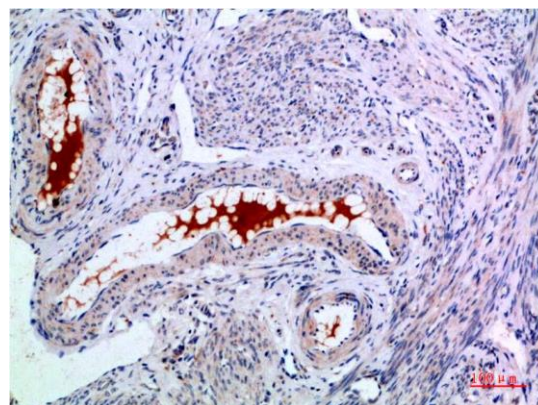
Specificity: The antibody detects endogenous Claudin-7 proteins.

Alternative Names: CLDN7, CEPTRL2, CPETRL2

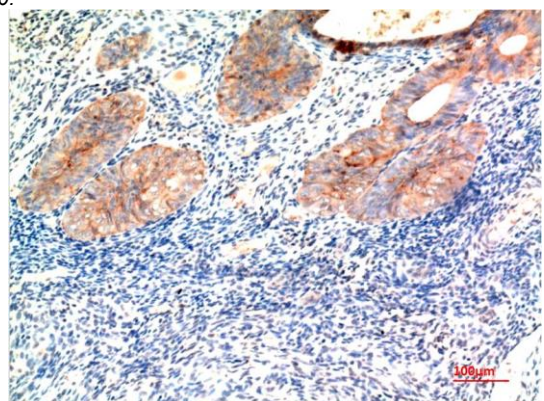
Background: claudin 7(CLDN7) Homo sapiens This gene encodes a member of the claudin family. Claudins are integral membrane proteins and components of tight junction strands. Tight junction strands serve as a physical barrier to prevent solutes and water from passing freely through the paracellular space between epithelial or endothelial cell sheets, and also play critical roles in maintaining cell polarity and signal transductions. Differential expression of this gene has been observed in different types of malignancies, including breast cancer, ovarian cancer, hepatocellular carcinomas, urinary tumors, prostate cancer, lung cancer, head and neck cancers, thyroid carcinomas, etc.



Immunohistochemical analysis of paraffin-embedded Human Kidney Carcinoma Tissue using Claudin-7 (TDY793) Mouse mAb diluted at 1:200.



Immunohistochemical analysis of paraffin-embedded Human Endometrial Carcinoma Tissue using Claudin-7 (TDY793) Mouse mAb diluted at 1:200.



Immunohistochemical analysis of paraffin-embedded Human Endometrial Carcinoma Tissue using Claudin-7 (TDY793) Mouse mAb diluted at 1:200.

Applications: WB-Western blot IHC-Immunohistochemistry IF-Immunofluorescence IP-Immunoprecipitation ChIP-Chromatin
Immunoprecipitation
Reactivity: H-Human R-Rat M-Mouse Mk-Monkey Dg-Dog Ch-Chicken Hm-Hamster Rb-Rabbit Sh-Sheep Pg-Pig