

TFE3 Mouse Monoclonal Antibody(6B8)

Catalog TDY799C TDY799F

Quantity 50μL 100μL

Tel: 010-80117836

Web: www.tdybio.com

Entrez-Gene ID:7030, Swiss-Prot Acc.P19532

For research use only.

Applications	Species	Cross-Reactivity	Molecular Weight	Isotype
IHC	H	H	62KD	IgG1

Storage Buffer & Condition: PBS, pH 7.4, containing 0.02% **sodium azide** as Preservative and 50% Glycerol.
Store at **-20°C**. **Do not aliquot the antibody.**

Recommended dilutions: IHC 1:100-200

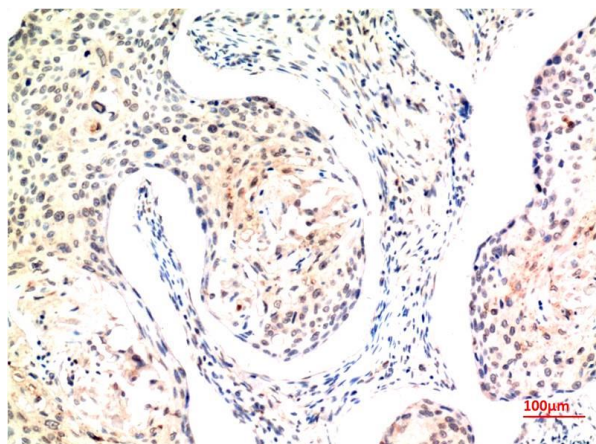
Optimal dilutions should be determined by the end user.

Specificity: The antibody detects endogenous TFE3 proteins.

Alternative Names: BHLHE33; Transcription factor E3; Class E basic helix-loop-helix protein 33; bHLHe33

Background: transcription factor binding to IGHM enhancer 3(TFE3) Homo sapiens This gene encodes a basic helix-loop-helix domain-containing transcription factor that binds MUE3-type E-box sequences in the promoter of genes. The encoded protein promotes the expression of genes downstream of transforming growth factor beta (TGF-beta) signaling. This gene may be involved in chromosomal translocations in renal cell carcinomas and other cancers, resulting in the production of fusion proteins.

Translocation partners include PRCC (papillary renal cell carcinoma), NONO (non-POU domain containing, octamer-binding), and ASPSCR1 (alveolar soft part sarcoma chromosome region, candidate 1), among other genes.



Immunohistochemical analysis of paraffin-embedded Human Esophageal Squamous Cell Carcinoma Tissue using TFE3 (TDY799) Mouse mAb diluted at 1:200.

Applications: WB-Western blot IHC-Immunohistochemistry IF-Immunofluorescence IP-Immunoprecipitation ChIP-Chromatin
Immunoprecipitation
Reactivity: H-Human R-Rat M-Mouse Mk-Monkey Dg-Dog Ch-Chicken Hm-Hamster Rb-Rabbit Sh-Sheep Pg-Pig