

Lamin B1 (Cleaved) Mouse Monoclonal Antibody(7B7)

Catalog TDY809C TDY809F

Quantity 50μL 100μL

Tel: 010-80117836

Web: www.tdybio.com

Entrez-Gene ID:7157 , Swiss-Prot Acc.P04637

For research use only.

Applications	Species Cross-Reactivity	Molecular Weight	Isotype
WB	H, R, M	68KD	IgG1

Storage Buffer & Condition: PBS, pH 7.4, containing 0.02% **sodium azide** as Preservative and 50% Glycerol.

Store at **-20°C**. **Do not aliquot the antibody.**

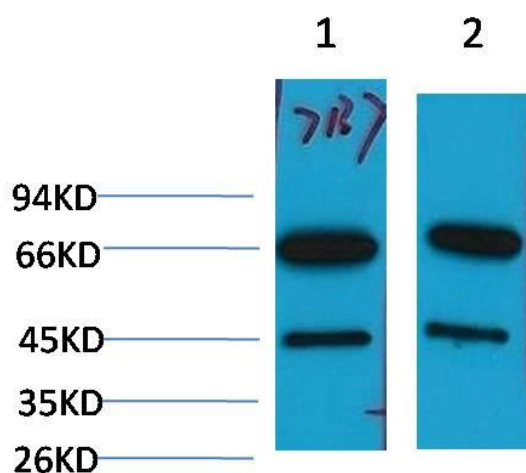
Recommended dilutions: WB: 1:1,000-2,000

Optimal dilutions should be determined by the end user.

Specificity: The Lamin B1 antibody can detects endogenous Cleaved Lamin B1 protein.

Alternative Names: ADLD, LMB1, LMNB1, MGC111419, OTTHUMP00000159218

Background: The nuclear lamina consists of a two-dimensional matrix of proteins located next to the inner nuclear membrane. The lamin family of proteins make up the matrix and are highly conserved in evolution. During mitosis, the lamina matrix is reversibly disassembled as the lamin proteins are phosphorylated. Lamin proteins are thought to be involved in nuclear stability, chromatin structure and gene expression. Vertebrate lamins consist of two types, A and B. This gene encodes one of the two B type proteins, B1.



Western blot analysis of 1) 293T Cell Lysate, 2) Hela Cell Lysate, using Lamin B1(Cleaved) (TDY809) Mouse mAb diluted at 1:2000.