

## 14-3-3 eta Mouse Monoclonal Antibody(5B2)

Catalog TDY817C TDY814F

Quantity 50μL 100μL

Tel: 010-80117836

Web: www.tdybio.com

Entrez-Gene ID:7533, Swiss-Prot Acc.Q04917

**For research use only.**

Applications	Species Cross-Reactivity	Molecular Weight	Isotype
WB, IHC	H, M, R	28KD	IgG1

**Storage Buffer & Condition:** PBS, pH 7.4, containing 0.02% **sodium azide** as Preservative and 50% Glycerol.  
Store at **-20°C. Do not aliquot the antibody.**

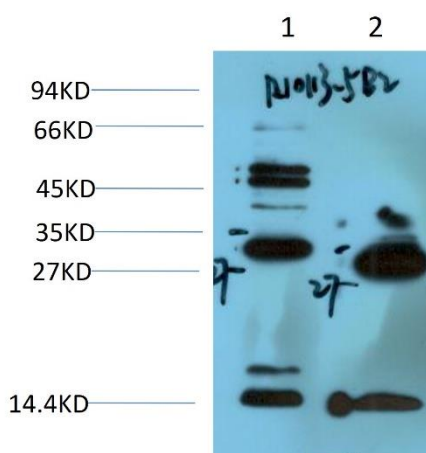
**Recommended dilutions:** WB 1:2,000-10,000 IHC 1:100-200

**Optimal dilutions should be determined by the end user.**

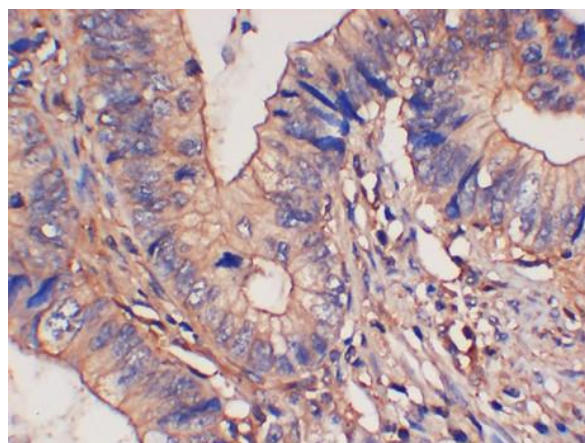
**Specificity:** The antibody detects endogenous 14-3-3 eta proteins.

**Alternative Names:** YWHAH; YWHA1; 14-3-3 protein eta; Protein AS1

**Background:** tyrosine 3-monooxygenase/tryptophan 5-monooxygenase activation protein eta(YWHAH) Homo sapiens This gene product belongs to the 14-3-3 family of proteins which mediate signal transduction by binding to phosphoserine-containing proteins. This highly conserved protein family is found in both plants and mammals, and this protein is 99% identical to the mouse, rat and bovine orthologs. This gene contains a 7 bp repeat sequence in its 5' UTR, and changes in the number of this repeat have been associated with early-onset schizophrenia and psychotic bipolar disorder.



Western blot analysis of 1) Rat Brain Tissue, 2) HeLa Cell Lysate using 14-3-3 eta (TDY817) Mouse mAb diluted at 1:2000.



Immunohistochemical analysis of paraffin-embedded Human Colon Carcinoma Tissue using 14-3-3 eta (TDY817) Mouse mAb diluted at 1:200.