

14-3-3 eta Mouse Monoclonal Antibody(5F2)

Catalog TDY818C TDY818F

Quantity 50μL 100μL

Tel: 010-80117836

Web: www.tdybio.com

Entrez-Gene ID:7533, Swiss-Prot Acc.Q04917

For research use only.

Applications	Species Cross-Reactivity	Molecular Weight	Isotype
WB, IHC	H, M, R	28KD	IgG1

Storage Buffer & Condition: PBS, pH 7.4, containing 0.02% **sodium azide** as Preservative and 50% Glycerol.
Store at **-20°C. Do not aliquot the antibody.**

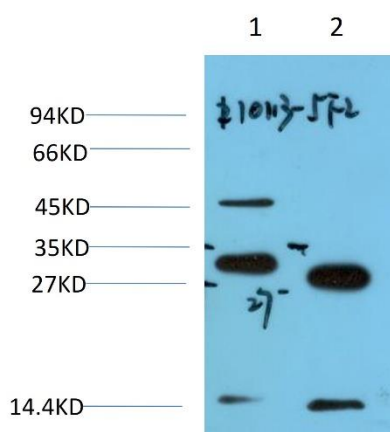
Recommended dilutions: WB 1:2,000-10,000 IHC 1:100-200

Optimal dilutions should be determined by the end user.

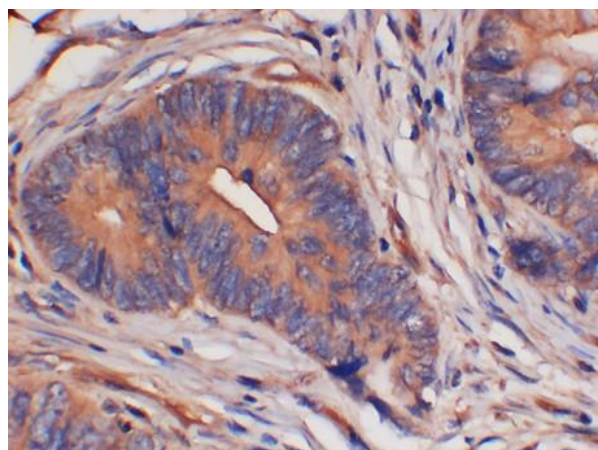
Specificity: The antibody detects endogenous 14-3-3 eta proteins.

Alternative Names: YWHAH; YWHA1; 14-3-3 protein eta; Protein AS1

Background: tyrosine 3-monooxygenase/tryptophan 5-monooxygenase activation protein eta(YWHAH) Homo sapiens This gene product belongs to the 14-3-3 family of proteins which mediate signal transduction by binding to phosphoserine-containing proteins. This highly conserved protein family is found in both plants and mammals, and this protein is 99% identical to the mouse, rat and bovine orthologs. This gene contains a 7 bp repeat sequence in its 5' UTR, and changes in the number of this repeat have been associated with early-onset schizophrenia and psychotic bipolar disorder.



Western blot analysis of 1) Rat Brain Tissue, 2) Hela Cell Lysate using 14-3-3 eta (TDY818) Mouse mAb diluted at 1:2000.



Immunohistochemical analysis of paraffin-embedded Human Colon Carcinoma Tissue using 14-3-3 eta (TDY818) Mouse mAb diluted at 1:200.

Applications: WB-Western blot IHC-Immunohistochemistry IF-Immunofluorescence IP-Immunoprecipitation ChIP-Chromatin
Immunoprecipitation
Reactivity: H-Human R-Rat M-Mouse Mk-Monkey Dg-Dog Ch-Chicken Hm-Hamster Rb-Rabbit Sh-Sheep Pg-Pig