

# SUMO3 Rabbit Polyclonal Antibody

Catalog TDY845C TDY845F

Tel: 010-80117836

Web: www.tdybio.com

Quantity 50μL 100μL

Entrez-Gene ID:6612 , Swiss-Prot Acc.:P55854

**For research use only.**

Applications	Species Cross-Reactivity	Molecular Weight	Isotype
WB, IHC	H, M, R		IgG

**Storage Buffer & Condition:** Antigen Affinity Purified IgG in PBS, pH 7.4, containing 0.02% **sodium azide** as Preservative and 50% Glycerol. Store at **-20°C. Do not aliquot the antibody.**

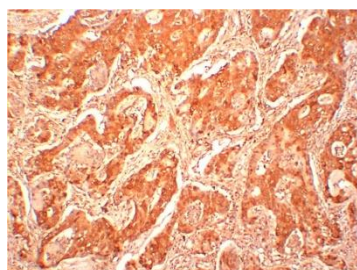
**Recommended dilutions:** WB: 1:1,000-2,000 IHC 1:100-200

**Optimal dilutions should be determined by the end user.**

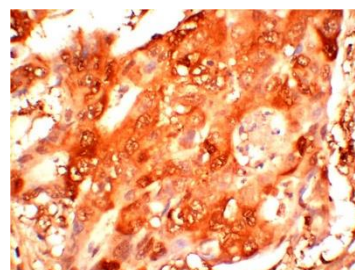
**Specificity:** The Antibody can detect endogenous SUMO3 proteins.

**Alternative Names:** SMT3 homolog 1, SMT3H1

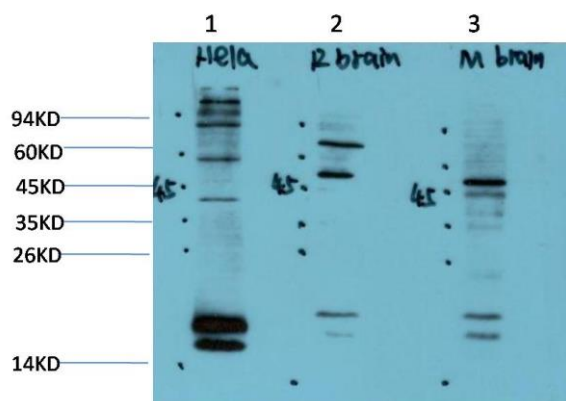
**Background:** Small ubiquitin-like modifier 3 (SUMO3) Homo sapiens This gene encodes a protein that is a member of the SUMO (small ubiquitin-like modifier) protein family. It functions in a manner similar to ubiquitin in that it is bound to target proteins as part of a post-translational modification system. However, unlike ubiquitin which targets proteins for degradation, this protein is involved in a variety of cellular processes, such as nuclear transport, transcriptional regulation, apoptosis, and protein stability. It is not active until the last four amino acids of the carboxy-terminus have been cleaved off. Several pseudogenes have been reported for this gene. Alternate transcriptional splice variants encoding different isoforms have been characterized.



Immunohistochemical analysis of paraffin-embedded Human Colon Carcinoma Tissue using (TDY845) Rabbit polyclonal antibody diluted at 1:200.



Immunohistochemical analysis of paraffin-embedded Human Colon Carcinoma Tissue using (TDY845) Rabbit polyclonal antibody diluted at 1:200.



Western blot analysis of 1) HeLa Cell, 2) Rat Liver Tissue, 3) Mouse Liver Tissue Lysate using (TDY845) Rabbit pAb diluted at 1:2,000.

**Applications:** WB-Western blot IHC-Immunochemistry IF-Immunofluorescence IP-Immunoprecipitation ChIP-Chromatin Immunoprecipitation  
**Reactivity:** H-Human R-Rat M-Mouse Mk-Monkey Dg-Dog Ch-Chicken Hm-Hamster Rb-Rabbit Sh-Sheep Pg-Pig Z-Zebrafish