

## CSL4/EXOSC1 Rabbit Polyclonal Antibody

Catalog TDY847C TDY847F

Tel: 010-80117836

Web: [www.tdybio.com](http://www.tdybio.com)

Quantity 50μL 100μL

Entrez-Gene ID:51013 , Swiss-Prot Acc.:Q9Y3B2

**For research use only.**

Applications	Species Cross-Reactivity	Molecular Weight	Isotype
WB, IHC	H, M, R	21KD	IgG

**Storage Buffer & Condition:** Antigen Affinity Purified IgG in PBS, pH 7.4, containing 0.02% **sodium azide** as Preservative and 50% Glycerol. Store at **-20°C. Do not aliquot the antibody.**

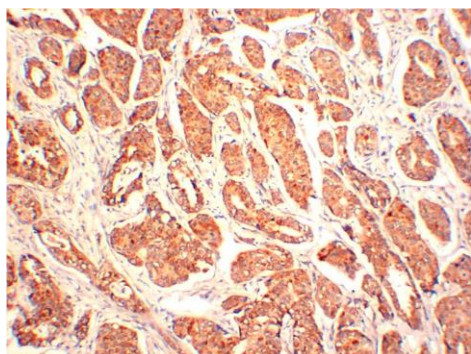
**Recommended dilutions:** WB: 1:2,000-5,000 IHC 1:100-200

**Optimal dilutions should be determined by the end user.**

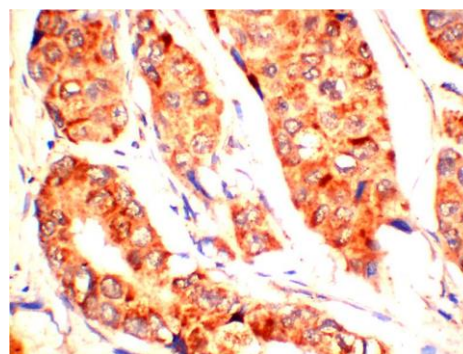
**Specificity:** The Antibody can detect Recombinant CSL4 proteins.

**Alternative Names:** EXOSC1, EXOS1, CGI 108, Exosomal core protein, SKI4

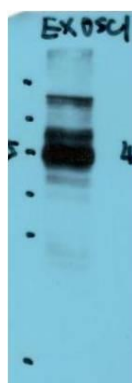
**Background:** This gene encodes a core component of the exosome. The mammalian exosome is required for rapid degradation of AU rich element-containing RNAs but not for poly(A) shortening. The association of this protein with the exosome is mediated by protein-protein interactions with ribosomal RNA-processing protein 42 and ribosomal RNA-processing protein 46. Alternative splicing of this gene results in multiple transcript variants.



Immunohistochemical analysis of paraffin-embedded Human Breast Carcinoma Tissue using (TDY847) Rabbit polyclonal antibody diluted at 1:200.



Immunohistochemical analysis of paraffin-embedded Human Breast Carcinoma Tissue using (TDY847) Rabbit polyclonal antibody diluted at 1:200.



Western blot analysis of Recombinant CSL4 protein using (TDY847) Rabbit pAb diluted at 1:5,000.

**Applications:** WB-Western blot IHC-Immunochemistry IF-Immunofluorescence IP-Immunoprecipitation ChIP-Chormatin Immunoprecipitation  
**Reactivity:** H-Human R-Rat M-Mouse Mk-Monkey Dg-Dog Ch-Chicken Hm-Hamster Rb-Rabbit Sh-Sheep Pg-Pig Z-Zebrafish