

RRP4/EXOSC2 Rabbit Polyclonal Antibody

Catalog TDY848C TDY848F

Tel: 010-80117836

Web: www.tdybio.com

Quantity 50μL 100μL

Entrez-Gene ID:23404 , Swiss-Prot Acc.:Q13868

For research use only.

Applications	Species Cross-Reactivity	Molecular Weight	Isotype
WB, IHC	H, M, R	33KD	IgG

Storage Buffer & Condition: Antigen Affinity Purified IgG in PBS, pH 7.4, containing 0.02% **sodium azide** as Preservative and 50% Glycerol. Store at **-20°C. Do not aliquot the antibody.**

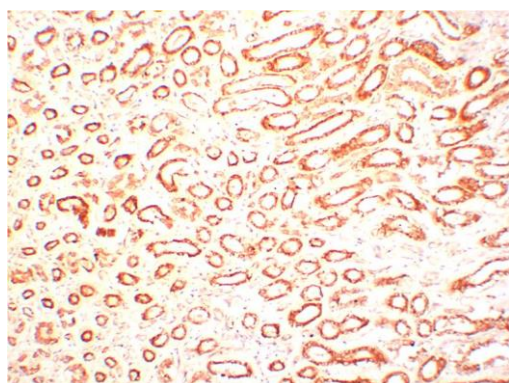
Recommended dilutions: WB: 1:2,000-5,000 IHC 1:100-200

Optimal dilutions should be determined by the end user.

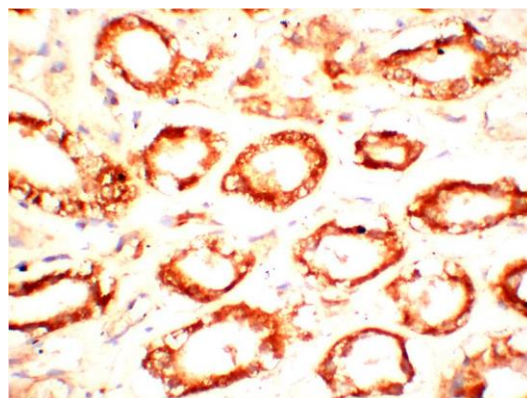
Specificity: The Antibody can detect Endogenous RRP4 proteins.

Alternative Names: EXOSC2, RRP4p, Exosome component 2, P7

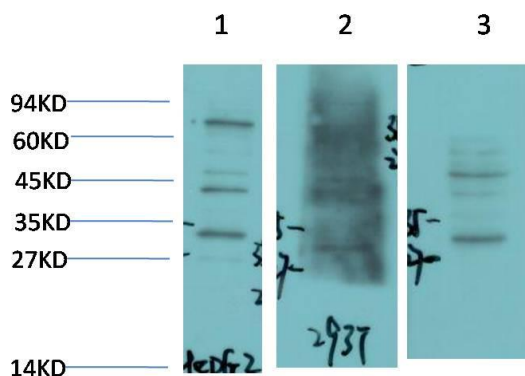
Background: This gene encodes a core component of the exosome. The mammalian exosome is required for rapid degradation of AU rich element-containing RNAs but not for poly(A) shortening. The association of this protein with the exosome is mediated by protein-protein interactions with ribosomal RNA-processing protein 42 and ribosomal RNA-processing protein 46. Alternative splicing of this gene results in multiple transcript variants.



Immunohistochemical analysis of paraffin-embedded Human Kidney Tissue using (TDY848) Rabbit polyclonal antibody diluted at 1:200.



Immunohistochemical analysis of paraffin-embedded Human Kidney Tissue using (TDY848) Rabbit polyclonal antibody diluted at 1:200.



Western blot analysis of 1) HepG2 Cell, 2) 293T Cell, 3) Jurkat Cell Lysate using (TDY848) Rabbit pAb diluted at 1:2,000.