

EXOSC5 Rabbit Polyclonal Antibody

Catalog TDY851C TDY851F

Tel: 010-80117836

Web: www.tdybio.com

Quantity 50μL 100μL

Entrez-Gene ID: 56915, Swiss-Prot Acc.: Q9NQ4

For research use only.

Applications	Species Cross-Reactivity	Molecular Weight	Isotype
WB, IHC	H, M	28KD	IgG

Storage Buffer & Condition: Antigen Affinity Purified IgG in PBS, pH 7.4, containing 0.02% **sodium azide** as Preservative and 50% Glycerol. Store at **-20°C**. **Do not aliquot the antibody.**

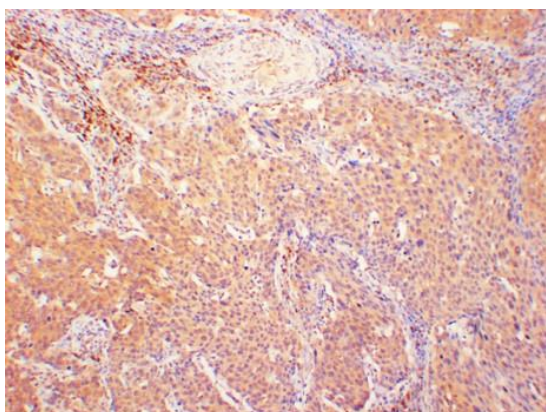
Recommended dilutions: WB: 1:2,000-5,000 IHC 1:100-200

Optimal dilutions should be determined by the end user.

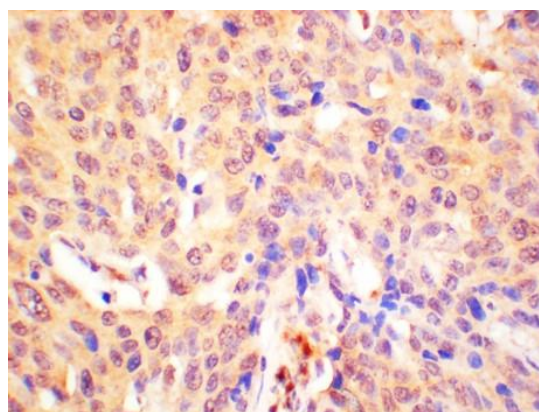
Specificity: The Antibody can detect Endogenous EXOSC5 proteins.

Alternative Names: CML28, p12B, RRP46, RRP41B, exosome component 5

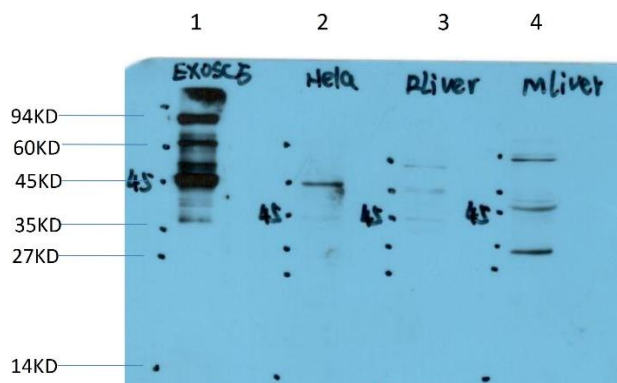
Background: CML28 is a component of the human exosome, which is a multiprotein complex involved in the 3' processing and degradation of RNA [PMID:12359762].



Immunohistochemical analysis of paraffin-embedded Human Cervical Carcinoma Tissue using EXOSC5 (TDY851) Rabbit polyclonal antibody diluted at 1:200.



Immunohistochemical analysis of paraffin-embedded Human Cervical Carcinoma Tissue using EXOSC5 (TDY851) Rabbit polyclonal antibody diluted at 1:200.



Western blot analysis of 1) Recombinant EXOSC5 Protein, 2) HeLa Cell, 3) Rat Liver Tissue, 4) Mouse Liver Tissue Lysate using EXOSC5 (TDY851) Rabbit pAb diluted at 1:2,000.