

EXOSC6 Rabbit Polyclonal Antibody

Catalog	TDY852C	TDY852F	Tel: 010-80117836
			Web: www.tdybio.com
Quantity	50μL	100μL	Entrez-Gene ID: 118460, Swiss-Prot Acc.:Q5RKV6

For research use only.

Applications	Species Cross-Reactivity	Molecular Weight	Isotype
WB, IHC	H	30KD	IgG

Storage Buffer & Condition: Antigen Affinity Purified IgG in PBS, pH 7.4, containing 0.02% **sodium azide** as Preservative and 50% Glycerol. Store at **-20°C. Do not aliquot the antibody.**

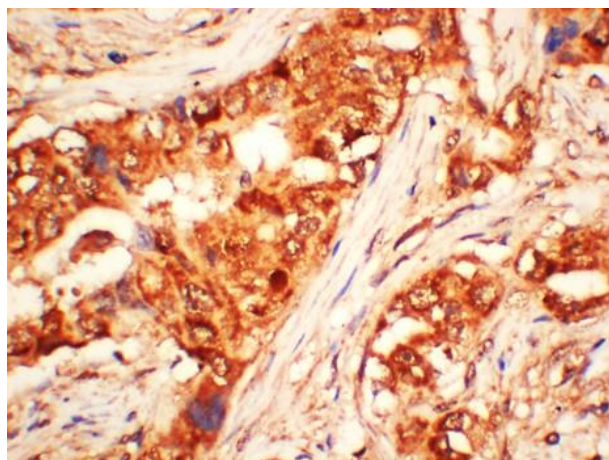
Recommended dilutions: WB: 1:2,000-5,000 IHC 1:100-200

Optimal dilutions should be determined by the end user.

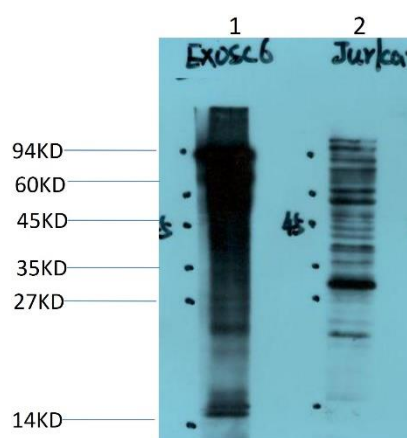
Specificity: The Antibody can detect Endogenous EXOSC6 proteins.

Alternative Names: exosome component 6, MTR3, P11, EAP4, Mtr3p

Background: EXOSC6 (Exosome Component 6) is a Protein Coding gene. Diseases associated with EXOSC6 include Plantar Wart and Pontocerebellar Hypoplasia. Among its related pathways are Metabolism of proteins and rRNA processing in the nucleus and cytosol. Gene Ontology (GO) annotations related to this gene include RNA binding and exoribonuclease activity. An important paralog of this gene is EXOSC4..



Immunohistochemical analysis of paraffin-embedded Human Breast Carcinoma Tissue using EXOSC6 (TDY852) Rabbit polyclonal antibody diluted at 1:200.



Western blot analysis of 1) Recombinant EXOSC6 Protein, 2) Jurkat Cell Lysate using EXOSC6 (TDY852) Rabbit pAb diluted at 1:2,000.