

EXOSC7 Rabbit Polyclonal Antibody

Catalog TDY853C TDY853F

Tel: 010-80117836

Web: www.tdybio.com

Quantity 50μL 100μL

Entrez-Gene ID: 118460, Swiss-Prot Acc.: Q5RKV6

For research use only.

Applications	Species Cross-Reactivity	Molecular Weight	Isotype
WB, IHC	H, M, R	32KD	IgG

Storage Buffer & Condition: Antigen Affinity Purified IgG in PBS, pH 7.4, containing 0.02% **sodium azide** as Preservative and 50% Glycerol. Store at **-20°C. Do not aliquot the antibody.**

Recommended dilutions: WB: 1:2,000-5,000 IHC 1:100-200

Optimal dilutions should be determined by the end user.

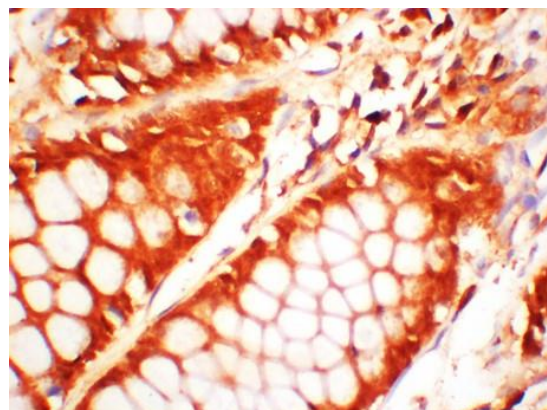
Specificity: The Antibody can detect Endogenous EXOSC7 proteins.

Alternative Names: RRP42, P8, KIAA0116, Rrp42p, EAP1, Ribosomal RNA-Processing protein 42

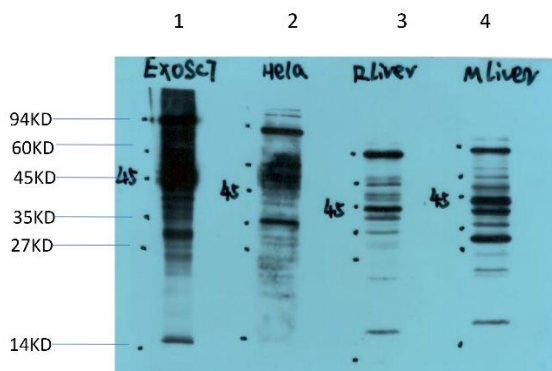
Background: EXOSC7 (Exosome Component 7) is a Protein Coding gene. Diseases associated with EXOSC7 include Pontocerebellar Hypoplasia. Among its related pathways are Metabolism of proteins and rRNA processing in the nucleus and cytosol. Gene Ontology (GO) annotations related to this gene include RNA binding and exoribonuclease activity. An important paralog of this gene is EXOSC9.



Immunohistochemical analysis of paraffin-embedded Human Colon Carcinoma Tissue using EXOSC7 (TDY853) Rabbit polyclonal antibody diluted at 1:200.



Immunohistochemical analysis of paraffin-embedded Human Colon Carcinoma Tissue using EXOSC7 (TDY853) Rabbit polyclonal antibody diluted at 1:200.



Western blot analysis of 1) Recombinant EXOSC7 Protein, 2) HeLa Cell, 3) Rat Liver Tissue, 4) Mouse Liver Tissue Lysate using EXOSC7 (TDY853) Rabbit pAb diluted at 1:2,000.

Applications: WB-Western blot IHC-Immunochemistry IF-Immunofluorescence IP-Immunoprecipitation ChIP-Chromatin Immunoprecipitation
Reactivity: H-Human R-Rat M-Mouse Mk-Monkey Dg-Dog Ch-Chicken Hm-Hamster Rb-Rabbit Sh-Sheep Pg-Pig Z-Zebrafish