

# EXOSC10 Rabbit Polyclonal Antibody

Catalog TDY856C TDY856F

Tel: 010-80117836

Web: www.tdybio.com

Quantity 50μL 100μL

Entrez-Gene ID: 11340, Swiss-Prot Acc.:Q96B26

**For research use only.**

Applications	Species Cross-Reactivity	Molecular Weight	Isotype
WB, IHC	H	30KD	IgG

**Storage Buffer & Condition:** Antigen Affinity Purified IgG in PBS, pH 7.4, containing 0.02% **sodium azide** as Preservative and 50% Glycerol. Store at **-20°C. Do not aliquot the antibody.**

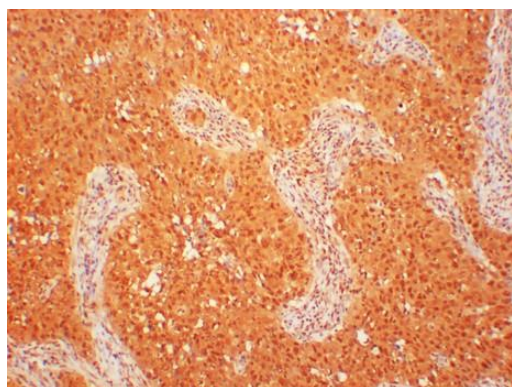
**Recommended dilutions:** WB: 1:2,000-5,000 IHC 1:100-200

**Optimal dilutions should be determined by the end user.**

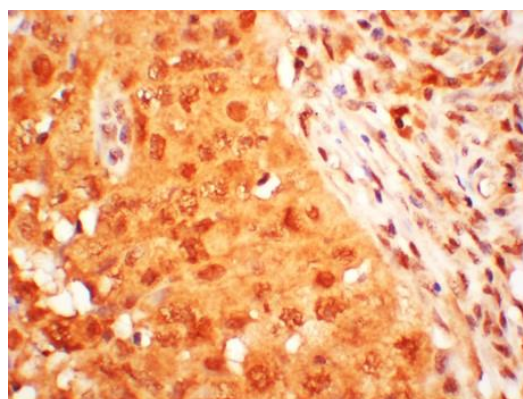
**Specificity:** The Antibody can detect Endogenous EXOSC8 proteins.

**Alternative Names:** RRP43, OIP2, P9, Rrp43p, CIP3, EAP2, PCH1C

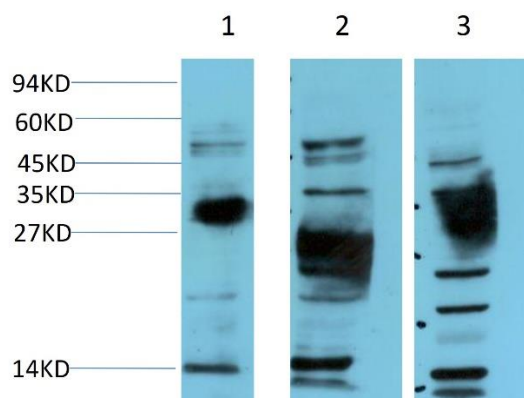
**Background:** This gene encodes a 3'-5' exoribonuclease that specifically interacts with mRNAs containing AU-rich elements. The encoded protein is part of the exosome complex that is important for the degradation of numerous RNA species. A pseudogene of this gene is found on chromosome 6. [provided by RefSeq, Mar 2009].



Immunohistochemical analysis of paraffin-embedded Human Lung Carcinoma Tissue using EXOSC10 (TDY856) Rabbit polyclonal antibody diluted at 1:200.



Immunohistochemical analysis of paraffin-embedded Human Lung Carcinoma Tissue using EXOSC10 (TDY856) Rabbit polyclonal antibody diluted at 1:200.



Western blot analysis of 1) Hela Cell, 2) Rat Liver Tissue, 3) Mouse Liver Tissue Lysate using EXOSC10 (TDY856) Rabbit pAb diluted at 1:2,000.