

GAPDH Rabbit Polyclonal Antibody

| | | | |
|----------|---------|---------|--|
| Catalog | TDY857C | TDY857F | Tel: 010-80117836 |
| | | | Web: www.tdybio.com |
| Quantity | 50μL | 100μL | Entrez-Gene ID# 2597, Swiss-Prot Acc.#P04406 |

For research use only.

| Applications | Species Cross-Reactivity | Molecular Weight | Isotype |
|--------------|--------------------------|------------------|---------|
| WB, IHC | H, R, M | 37KD | IgG |

Storage Buffer & Condition: Antigen Affinity Purified IgG in PBS, pH 7.4, containing 0.02% **sodium azide** as Preservative and 50% Glycerol.

Store at **-20°C. Do not aliquot the antibody.**

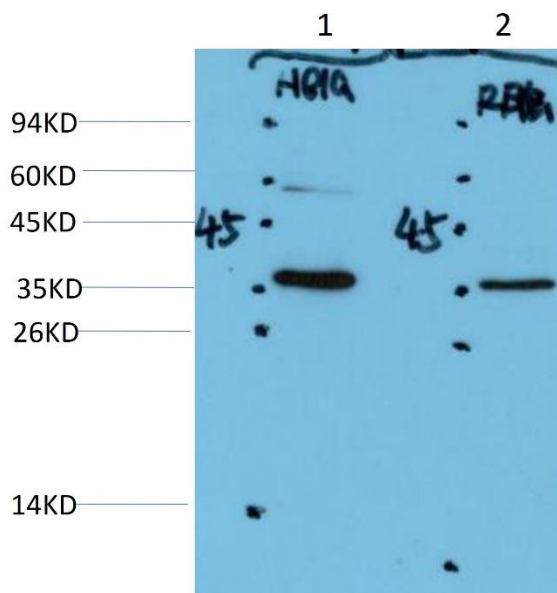
Recommended dilutions: WB: 1:5,000-10,000 IHC: 1:200-500

Optimal dilutions should be determined by the end user.

Specificity: Antibody can detect endogenous GAPDH protein.

Alternative Names: G3PDH antibody, BARS-38 antibody, Glyceraldehyde 3 phosphate dehydrogenase antibody

Background: Glyceraldehyde 3 phosphate dehydrogenase (GAPDH) is well known as one of the key enzymes involved in glycolysis. GAPDH is constitutively expressed in almost all tissues at high levels, therefore antibodies against GAPDH are useful as loading controls for Western Blotting. Some physiological factors, such as hypoxia and diabetes, increase GAPDH expression in certain cell types.



Western blot analysis of 1)HeLa Cell, 2) Rat Brain Tissue Lysate using GAPDH (TDY857) Rabbit pAb diluted at 1:20,000.