

## HSP90 $\alpha$ + $\beta$ Rabbit Polyclonal Antibody

Catalog TDY864C TDY864F

Tel: 010-80117836

Web: [www.tdybio.com](http://www.tdybio.com)

Quantity 50 $\mu$ L 100 $\mu$ L

Entrez-Gene ID#3320/3326, Swiss-Prot Acc.#P07900/P08238

**For research use only.**

Applications	Species Cross-Reactivity	Molecular Weight	Isotype
WB	R, M, (H)	90, 95KD	IgG

**Storage Buffer & Condition:** Antigen Affinity Purified IgG in PBS, pH 7.4, containing 0.02% **sodium azide** as Preservative and 50% Glycerol.

Store at **-20°C**. **Do not aliquot the antibody.**

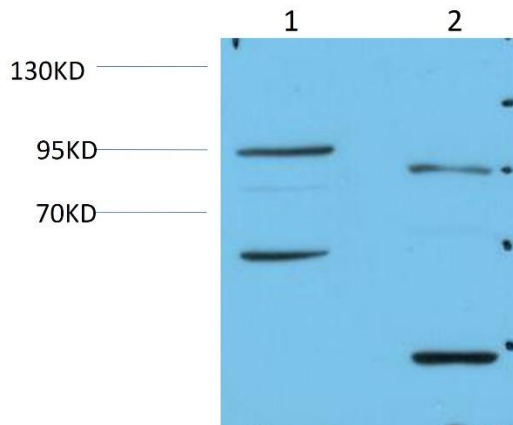
**Recommended dilutions:** WB: 1:500-1,000

**Optimal dilutions should be determined by the end user.**

**Specificity:** The Antibody can detects endogenous HSP90  $\alpha$  +  $\beta$  protein.

**Alternative Names:** EL52, Heat shock 86 KDa, HSP86, HSP90N, HSPC1, Heat shock 90KD protein 1 beta, HS90B, HSP90B, HSP90 beta, HSPCB, HSPC2, HSP 90b, HSP84

**Background:** Hsp90 (heat shock protein 90) is a chaperone protein that assists other proteins to fold properly, stabilizes proteins against heat stress, and aids in protein degradation. In mammalian cells, there are two or more genes encoding cytosolic Hsp90 homologues, with the human Hsp90 $\alpha$  showing 85% sequence identity to Hsp90 $\beta$ .



Western blot analysis of 1) Mouse Brain Tissue, 2) Rat Brain Tissue Lysate using HSP90 $\alpha$ + $\beta$  (TDY864) Rabbit Polyclonal Antibody diluted at 1:1,000.