

# Alpha Synuclein Rabbit Polyclonal Antibody

Catalog TDY866C TDY866F

Quantity 50μL 100μL

Tel: 010-80117836

Web: www.tdybio.com

Entrez-Gene ID:6622, Swiss-Prot Acc.P37840

**For research use only.**

Applications	Species Cross-Reactivity	Molecular Weight	Isotype
WB, IHC	H, M, R	14KD	IgG1

**Storage Buffer & Condition:** PBS, pH 7.4, containing 0.02% **sodium azide** as Preservative and 50% Glycerol.  
Store at **-20°C. Do not aliquot the antibody.**

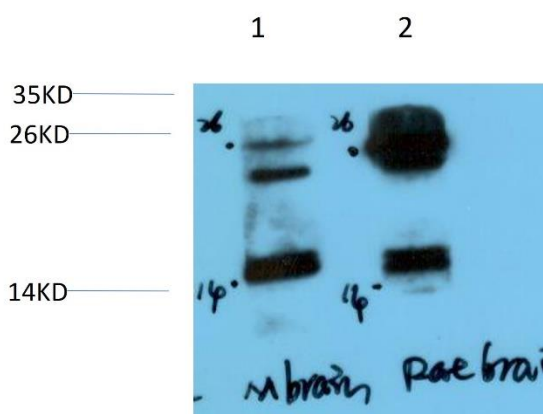
**Recommended dilutions:** WB 1:500-2,000 IHC 1:100-200

**Optimal dilutions should be determined by the end user.**

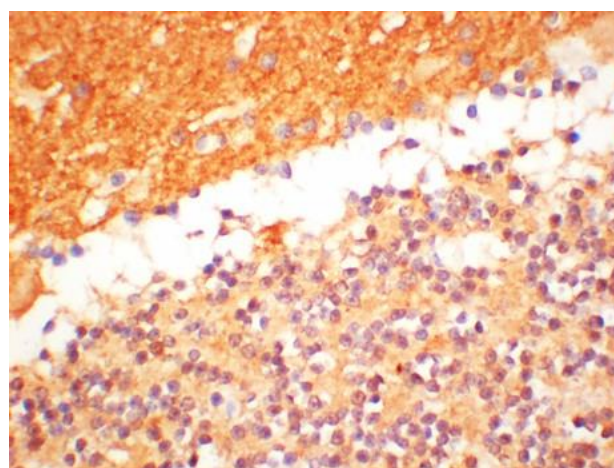
**Specificity:** The antibody detects endogenous alpha-Synuclein proteins.

**Alternative Names:** PARK1, SYN, SNCA, MGC105443, NACP

**Background:** Genetic alterations of SNCA resulting in aberrant polymerization into fibrils, are associated with several neurodegenerative diseases (synucleinopathies). SNCA fibrillar aggregates represent the major non A-beta component of Alzheimer disease amyloid plaque, and a major component of Lewy body inclusions.



Western blot analysis of 1) Mouse Brain Tissue, 2) Rat Brain Tissue Lysate using alpha-Synuclein (TDY866) Rabbit Polyclonal Antibody diluted at 1:2,000.



Immunohistochemical analysis of paraffin-embedded Mouse Brain Tissue using alpha-Synuclein (TDY866) Rabbit Polyclonal antibody diluted at 1:200.