

# TRIM21 Rabbit Polyclonal Antibody

|          |         |         |  |
|----------|---------|---------|--|
| Catalog  | TDY874C | TDY874F | Tel: 010-80117836                            |
| Quantity | 50μL    | 100μL   | Web: www.tdybio.com                          |
|          |         |         | Entrez-Gene ID#6737 , Swiss-Prot Acc.#P19474 |

**For research use only.**

| Applications | Species Cross-Reactivity | Molecular Weight | Isotype |
|--------------|--------------------------|------------------|---------|
| WB, IHC      | H                        | 52KD             | IgG     |

**Storage Buffer & Condition:** PBS, pH 7.4, containing 0.02% **sodium azide** as Preservative and 50% Glycerol.

Store at **-20°C. Do not aliquot the antibody.**

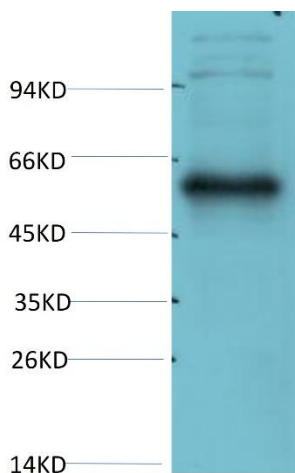
**Recommended dilutions:** WB: 1:1,000-2,000 IHC 1:100-200

**Optimal dilutions should be determined by the end user.**

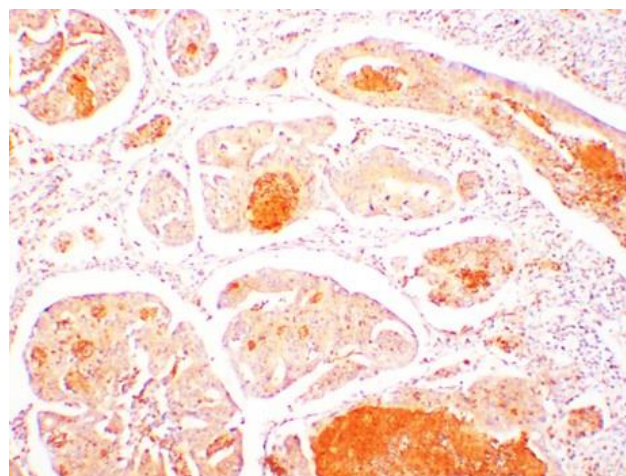
**Specificity:** Antibody can detect endogenous TRIM21 proteins.

**Alternative Names:** TRIM21 RNF81 RO52 SSA1

**Background:** tripartite motif containing 21 (TRIM21) Homo sapiens This gene encodes a member of the tripartite motif (TRIM) family. The TRIM motif includes three zinc-binding domains, a RING, a B-box type 1 and a B-box type 2, and a coiled-coil region. The encoded protein is part of the RoSSA ribonucleoprotein, which includes a single polypeptide and one of four small RNA molecules.



Western blot analysis of HeLa Cell Lysate using TRIM21 (TDY874) Rabbit pAb diluted at 1:2,000.



Immunohistochemical analysis of paraffin-embedded Human Colon Carcinoma Tissue using TRIM21 (TDY874) Rabbit Polyclonal antibody diluted at 1:200.