



## SMAD7 Mouse Monoclonal Antibody(3E3)

Catalog TDY1099C TDY1099F

Quantity 50μL 100μL

Tel: 010-80117836

Web: [www.tdybio.com](http://www.tdybio.com)

Entrez-Gene ID:4092 , Swiss-Prot Acc.P49841

**For research use only.**

Applications	Species	Cross-Reactivity	Molecular Weight	Isotype
WB,IHC		H,M,R	46KD	IgG1

**Storage Buffer & Condition:** Antigen Affinity Purified IgG in PBS, pH 7.4, containing 0.02% **sodium azide** as Preservative and 50% Glycerol.

Store at **-20°C**. **Do not aliquot the antibody.**

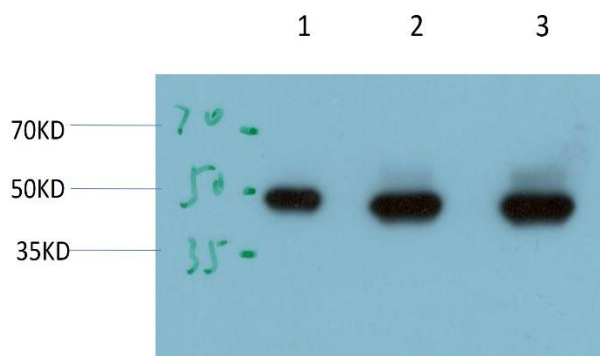
**Recommended dilutions:** WB: 1:1,000-2,000 IHC: 1:200-500

**Optimal dilutions should be determined by the end user.**

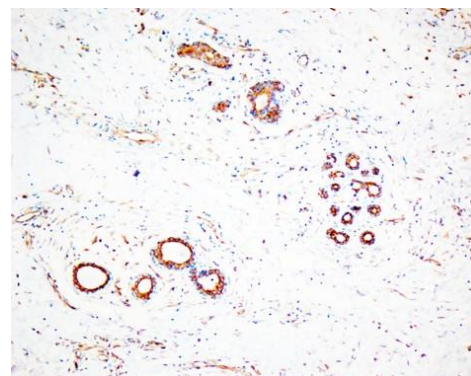
**Specificity:** Antibody can detect endogenous SMAD7 protein.

**Alternative Names:** SMAD7 MADH7 MADH8

**Background:** SMAD family member 7 (SMAD7) Homo sapiens The protein encoded by this gene is a nuclear protein that binds the E3 ubiquitin ligase SMURF2. Upon binding, this complex translocates to the cytoplasm, where it interacts with TGF-beta receptor type-1 (TGFR1), leading to the degradation of both the encoded protein and TGFR1. Expression of this gene is induced by TGFR1.



Western blot analysis of 1) Hela Cell, 2) Mouse Heart Tissue 3) Rat Heart Tissue Lysate using SMAD7 (TDY1099) Mouse Monoclonal Antibody diluted at 1:2,000.



Immunohistochemical analysis of paraffin-embedded Human Lung Carcinoma Tissue using SMAD7 (TDY1099) Mouse monoclonal antibody diluted at 1:200.

Applications: WB-Western blot IHC-Immunohistochemistry IF-Immunofluorescence IP-Immunoprecipitation ChIP-Chromatin  
Immunoprecipitation  
Reactivity: H-Human R-Rat M-Mouse Mk-Monkey Dg-Dog Ch-Chicken Hm-Hamster Rb-Rabbit Sh-Sheep Pg-Pig Z-Zebrafish