



ACE2 Mouse Monoclonal Antibody (2C1)

Catalog TDY1102C TDY1102F

Quantity 50μL 100μL

Tel: 010-80117836

Web: www.tdybio.com

Entrez-Gene ID:859272 , Swiss-Prot Acc.Q9BYF1

For research use only.

| Applications | Species Cross-Reactivity | Molecular Weight | Isotype |
|--------------|--------------------------|------------------|---------|
| WB, IHC, IF | H, M, R | 120-135KD | IgG1 |

Storage Buffer & Condition: Antigen Affinity Purified IgG in PBS, pH 7.4, containing 0.02% **sodium azide** as Preservative and 50% Glycerol.

Store at **-20°C. Do not aliquot the antibody.**

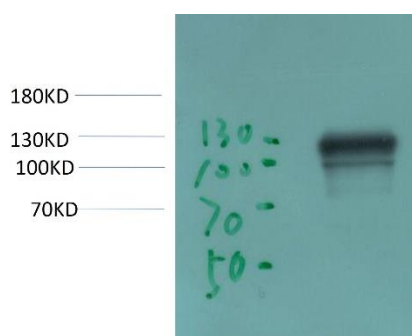
Recommended dilutions: WB: 1:1,000-5,000 IF: 1:200-500 IHC: 1:200-500

Optimal dilutions should be determined by the end user.

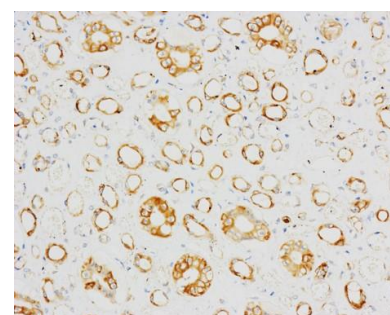
Specificity: Antibody can detect endogenous Human ACE2 protein, predict Cross-Reactivity with Mouse, Rat.

Alternative Names: ACE related carboxypeptidase, ACEH, Angiotensin converting enzyme 2, EC 3.4.17, DKFZP433A014

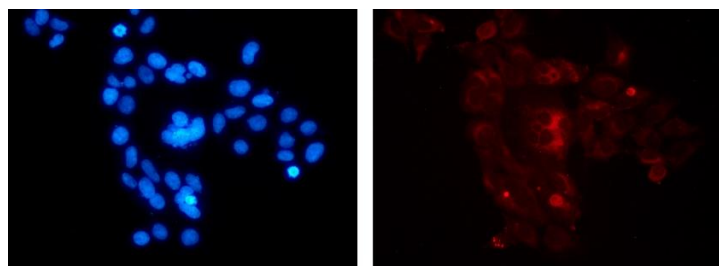
Background: angiotensin I converting enzyme 2 (ACE2) Homo sapiens The protein encoded by this gene belongs to the angiotensin-converting enzyme family of dipeptidyl carboxypeptidases and has considerable homology to human angiotensin 1 converting enzyme. This secreted protein catalyzes the cleavage of angiotensin I into angiotensin 1-9, and angiotensin II into the vasodilator angiotensin 1-7. The organ- and cell-specific expression of this gene suggests that it may play a role in the regulation of cardiovascular and renal function, as well as fertility. In addition, the encoded protein is a functional receptor for the spike glycoprotein of the human coronaviruses SARS and HCoV-NL63.



Western blot analysis of 293T Transfected ACE2 Cell Lysate using ACE2 (TDY1102) Mouse Monoclonal Antibody diluted at 1:50,000.



Immunohistochemical analysis of paraffin-embedded Human Kidney Tissue using ACE2 (TDY1102) Mouse monoclonal antibody diluted at 1:200.



IF analysis of 293T Transfected ACE2 Cell Lysate using ACE2 (TDY1102) Mouse Monoclonal Antibody diluted at 1:500.

Applications: WB-Western blot IHC-Immunohistochemistry IF-Immunofluorescence IP-Immunoprecipitation ChIP-Chromatin
 Reactivity: H-Human R-Rat M-Mouse Mk-Monkey Dg-Dog Ch-Chicken Hm-Hamster Rb-Rabbit Sh-Sheep Pg-Pig Z-Zebrafish